

# JR

J&R PRODUCTS, INC.

## 2024

# EXPECT MORE

## Insulation & Weatherization Products | Accessories | PPE



# Table of Contents

Welcome to J&R Products. To view pricing and our online catalog, please visit us at [jrproductsinc.com](http://jrproductsinc.com)

## SAFETY PRODUCTS

Coveralls, Hoods, and Diagnostic Accessories .....	2
Allegro® Air Systems and Ventilation Blowers.....	3
Foam Safety Products.....	3–5

## FOAM SYSTEMS

Foam Release & Mold Cleaner.....	6
Knives, Combs, Scrapers, and Saws .....	7
HandiFoam® & BOSS® Spray Foam and Accessories .....	8
Spray Foam Dispensing Tools .....	8
Froth-Pak™ Foam Insulation.....	9
Thermal Barriers.....	9
Wraps and Warmers.....	10
Foam Guns .....	11–12
Can Foam .....	12

## TAPES/ADHESIVES

Vinyl Tape .....	13
Tape .....	13–15
Duct Tape.....	14
Polypropylene Facing Tape.....	14
Aerosol Adhesives.....	15
FSK and WMP Paper.....	15

## CAULK/CAULKING TOOLS

Caulk Guns .....	16
Caulk.....	16–18
Backer Rod.....	17
Fireblock Caulk.....	17
Flex-Mend™ .....	17
Big Stretch®, Through the Roof®, Lexel®, Mor-flex® and Slab®.....	18
Duct Mastic .....	19

## WEATHERSTRIPPING

Weatherstrips .....	20
Door Sweeps.....	21
Thresholds.....	21

## VENTS/HOSES/BAFFLES

Bathrooms Vent Kits .....	22
Dryer Vents.....	22
AccuVent® Vents and Baffles .....	23
Innovent™ Attic Baffles .....	23
Innovent™ PLUS Attic Baffles.....	24
Attic Rulers.....	25
R-Sticks.....	25
Cardboard Baffles & Chutes.....	25

## FASTENING SYSTEMS

Hammer Tackers.....	26–27
Staple Guns .....	27
Pneumatic Staplers.....	28
Stapler Schematics.....	29

## INSULATION/ACCESSORIES

Chimney Balloons.....	30
Insulation Anchors .....	30
Duct Wraps.....	31
Insulation Batt Supports .....	31
Insulation Pillows .....	31
Water Heater Insulation Jackets.....	31
Insul-Shield™ .....	31
Recessed Light Covers.....	32
Sill Plate Gasket.....	32
Housewrap .....	32
Reflective Insulation .....	33
Vapor Barriers.....	33
Construction Film .....	34
Attic Access Covers .....	34
Santa Fe Dehumidifiers.....	35

## WEBBING/NETTING

Polyweb and Insulweb®.....	36
Insulation Netting .....	37

## MISCELLANEOUS TOOLS

Plugs .....	37–38
Bits and Hole Saws .....	39–40
Stilts.....	41–43
Tool Pouches and Belts .....	44
Utility Knives.....	44
Gaskets and Sealing Foam .....	45

## INSULATION MACHINES/ACCESSORIES

Hoses.....	46
Nozzles and Accessories.....	47–49
Insulation Machines.....	50–54
Blower Motors .....	55
Vacuums and Accessories.....	56–58
Hose Reels .....	59
Stud Scrubbers.....	60
Spray Nozzles .....	61
Pumps and Motors.....	62



**Your Loyalty Rewarded**  
Earn points on EVERY purchase that can be redeemed for endless FREE rewards. More info on page 40.



INDICATES PRODUCTS  
MADE BY J&R



### Coveralls

These disposable coveralls resist tears or punctures and stay tough wet or dry. A full cut allows coveralls to be worn comfortably over clothing for a variety of jobs. They have a zip front with a collar and elastic cuffs and ankles. They are also available with a hood. Coveralls are sold individually and packaged with 25 per case.



SKU	DESCRIPTION
88083	Large
88084	X-Large
88085	XX-Large
88086	XXX-Large
88087	XXXX-Large
88078	Large, Hooded
88079	X-Large, Hooded
88080	XX-Large, Hooded
88081	XXX-Large, Hooded
88082	XXXX-Large, Hooded
481618	Non-Skid Shoe Covers



### 18 in. Knit Hoods

18 in. knit hoods are used for protection when spraying foam. Hoods are packaged with 12 per pack.

SKU	DESCRIPTION	QUANTITY
FH-018	18 in.	12/Pack



### Smoke Pencil Pro

This non-toxic smoke stick generates a small amount of smoke to help you identify drafts.

SKU	DESCRIPTION
SP-001	Smoke Pencil Pro
SP-003	Smoke Pencil Pro Fluid Refill
SP-004	Smoke Pencil Pro Field Kit



### Work Gloves

GripTech gloves are ultra-light polyurethane palm coated, offering superior grip and abrasion resistance. Ultra Tech is a heavier weight glove with a blue natural rubber coating. String knit fabric gloves are machine-knit fabric gloves that can be used as a liner or as light-duty work gloves. These gloves absorb perspiration for comfort and are packaged with 12 pairs per pack.

SKU	DESCRIPTION	QUANTITY
GL-100	Ultra Tech Rubber Coated Gloves	12 Pairs/Pack
GL-101	GripTech Polyurethane Coated Gloves	12 Pairs/Pack
GL-200	String Knit Gloves, White, Heavyweight	12 Pairs/Pack
GL-300	String Knit Gloves, White, Standard-Weight	12 Pairs/Pack
GL-400	String Knit Gloves, Gray, Standard-Weight	12 Pairs/Pack



### Grill Mask Covers

Grill mask is ideal for covering holes and duct registers while performing diagnostics tests. 12 in. x 216 ft. Grill mask is perforated.

SKU	DESCRIPTION
GR-109	Grill Mask Covers



### 3M™ Respirator Masks with Exhalation Valves

The 3M™ particulate respirator 8511 mask keeps the air in the respirator cooler and drier for better comfort. This mask is NIOSH approved and is packaged 10 per box with 8 boxes per case.

SKU	DESCRIPTION	QUANTITY
DM-850	3M™ 8511 N95	10/Box; 8 Boxes/Case



DM-820



DM-820V

### 3M™ Heavy-Duty Masks

These masks have two heavy-duty head straps and an adjustable nosepiece/foam inner seal. 8210 masks are N95 NIOSH approved and comply with OSHA regulations and are packaged 8 boxes per case.

SKU	DESCRIPTION	QUANTITY
DM-820	3M™ Particulate Respirator 8210, N95	20/Box; 8 Boxes/Case
DM-820V	3M™ Particulate Respirator 8210V, N95	10/Box; 8 Boxes/Case



AM-100



AM-200



AM-102



AM-025

### Allegro® Air Systems

These full mask systems provide a portable air source. They include one full mask supplied air respirator, a ¼ HP ambient air pump and 100 ft. breathing air hose.

SKU	DESCRIPTION	QUANTITY
AM-100	Allegro® Respirator, 100 ft. Air Hose, ¼ HP Air Pump	—
AM-200	Allegro® 2 Man System, 100 ft. Air Hose, ¼ HP Air Pump	—
AM-101	Allegro® Inlet Filter for Air Pump	—
AM-102	Allegro® Exhaust Filter for Air Pump	—
AM-025	Allegro® Peel Off Lens Cover	25/Pack



### Allegro® Ventilation Blowers

Engineered for higher output flow rates than other blowers of its size, up to 950 cfm! Blowers come with a quick-connect 25 ft. L-ducting canister and attaches without tools using cam-lock latches. For free air: 950, one 90° bend: 725, or two 90° bends: 525. They are great for working in crawl spaces.

SKU	DESCRIPTION
VB-250	Allegro® Ventilation Blower, 25 ft. Hose



### 8 in. x 25 ft. Hose for Ventilation Blowers

Lightweight and retractable, this 8 in. diameter non-collapsible hose is designed for maximum air handling capabilities and built for dual direction flow with minimum friction loss. Vinyl and polyester materials with PVC coating make this single-ply duct stand up to any rugged environment. Hose meets ASTM 227 specs.

SKU	DESCRIPTION
VB-825	Hose for Ventilation Blowers, 8 in. x 25 ft.



### ADVANZ Goggles

ADVANZ goggles with 30 advances provide spray protection against spray and splash, and are perfect for spray painters. ADVANZ lens covers fit over all brands of full-face respirators and are used for spray painting or spray foam installation.

SKU	DESCRIPTION
AG-030	ADVANZ Goggles
AG-045	Lens Cover for ADVANZ Goggles

NG-003

NG-005



NG-002



NG-004

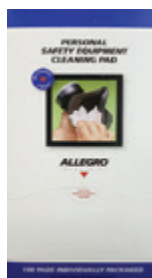


NG-006

### SureCare® Nitrile Gloves

SureCare® powder free nitrile industrial gloves are 100% accelerator free. Use these gloves when applying spray foam. Available in 4.2 mil or 6.5 mil in 100 count boxes.

SKU	DESCRIPTION	QUANTITY
NG-003	Large, 4.2 mil	1 Box; 100/Box
NG-004	X-Large, 4.2 mil	1 Box; 100/Box
NG-001	Small, 6.5 mil	1 Box; 100/Box
NG-002	Medium, 6.5 mil	1 Box; 100/Box
NG-005	Large, 6.5 mil	1 Box; 100/Box
NG-006	X-Large, 6.5 mil	1 Box; 100/Box



### Respirator Cleaning Pads

These pads provide a quick, safe and easy means of cleaning respirators and other personal safety equipment. The pads are large (5 in. x 8 in.) and are individually foil-wrapped wipes saturated with an alcohol-free benzalkonium chloride solution.

SKU	DESCRIPTION	QUANTITY
RP-100	Cleaning Pads	100/Box



DM-900



DM-902



DM-903

### Dentec® Comfort-Air® Series 300 Half Mask Respirators

Dentec® Comfort-Air® Series 300 half mask respirators are molded from a custom-engineered thermoplastic blend that provides economy with function. They combine comfort and compatibility without compromise and have a low-profile design. Other features include multi-position cartridge placement, extra-large inhalation valves, a patented corrugated exhale valve, low “dead air” space and a unique low-fitting design. These respirators use the same replacement parts as the Comfort-Air® series 100 silicone facepiece and have swivel strap retainers.

SKU	DESCRIPTION	QUANTITY
DM-900	Medium, Dentec® Comfort-Air® Series 300 Half Mask Respirator	—
DM-901	Large, Dentec® Comfort-Air® Series 300 Half Mask Respirator	—
DM-902	Dentec® N95 Safety Filter Pads	—
DM-903	Dentec® Particulate Pads Filter Assembly	4/Pack



DM-760



DM-770



DM-771



DM-789



DM-800



DM-817

### Honeywell Respirators

These respirators are comfortable and provide a secure fit without irritation. They also provide a wide field of vision, and are compatible with a variety of filters.

SKU	DESCRIPTION	QUANTITY
DM-760	Honeywell 7600 Series Full Facepiece Respirator	—
DM-770	Medium, Honeywell North Half Mask Facepiece Only	1
DM-769	Large, Honeywell North Half Mask Facepiece Only	1
DM-771*	High-Efficiency Filter Cartridges	2
DM-789*	Filter Holder/Cover	2
DM-800*	Dust/Mist Filters	10
DM-817*	Organic Filters (for Foam)	2

\*Uses same filters and cartridges as the half mask.



PF-2091



FF-6001



HF-6200  
&HF-6201



FF-441



FF-440



FF-442



FF-6900



FF-511



FF-501

### 3M™ Respirators

We carry a variety of 3M™ half facepiece and full face respirators and their compatible filters for diverse applications. Peel off lenses are also available for 3M™ Full Facepiece Reusable Respirators (SKU FF-6900).

SKU	DESCRIPTION
HF-6200	Medium, 3M™ Half Facepiece Reusable Respirator 6200/07025(AAD)
HF-6201	Large, 3M™ Half Facepiece Reusable Respirator 6300/07026(AAD)
HF-6203	3M™ Head Strap for Half Facepieces (HF-6200 & HF-6201)
FF-440	Large, 3M™ Ultimate FX Full Face Respirator FF-403
FF-6800	Medium, 3M™ Full Facepiece Reusable Respirator 6800
FF-6900	Large, 3M™ Full Facepiece Reusable Respirator 6900
482759	3M™ Peel Off Lens for FF-440
FF-6901	3M™ Peel Off Lens for FF-6900
PF-2091	3M™ Particulate Cartridge Filter 2091
FF-6001	3M™ Organic Vapor Cartridge Filter 6001
FF-441	3M™ Organic/Particulate Cartridge Filter 60921
FF-511	3M™ Particulate Filter 5N11, N95
FF-442	3M™ Organic Vapor/Acid Gas Cartridge/Filter 60923, P100
FF-501	3M™ Filter Retainer 501



HH-100



EP-730



89018



SG-100



SG-200



SG-300



FA-990



EP-200



EP-300



SG-400



SG-500



SG-600



EP-600



SG-800

### Safety Equipment

A variety of safety equipment including hard hats, earplugs and first aid kits. Earplugs are individually wrapped.

SKU	DESCRIPTION	QUANTITY
HH-100	Hard Hat	—
89018	3M™ Hard Hat	—
EP-730	Hearing Protector	—
EP-200	3M™ E-A-Rsoft™ Yellow Neons™ Earplugs	—
EP-300	Max Lite® Corded Earplugs	1 Box; 100/Box
EP-600	Resistor® II Corded Reusable Earplugs	1 Box; 100/Box
FA-990	First Aid Kit	—

### Safety Glasses

These glasses have contemporary styling and a unique one-size-fits-all adjustability.

SKU	DESCRIPTION
SG-100	Frame Safety Glasses, Clear/Blue
SG-200	Frame Safety Glasses, Tinted/Blue
SG-300	Pyramex Intruder Safety Glasses
SG-400	Provoke Safety Glasses
SG-500	Jackson Nemesis Safety Glasses, Clear
SG-600	Jackson Nemesis Safety Glasses, Smoke
SG-800	Honeywell Uvex Seismic® Anti-Fog Eyewear, Clear



### Radians® SV62 Class 2, Two Tone Surveyor Safety Vests

Radians SV62 Class 2, two tone surveyor safety vests are made of lightweight, highly visible polyester with a solid twill front and back that maintains brightness after 25 washings. It has a zipper front closure and a 2 in. reflective striping outlined in a contrasting color for increased visibility or night work. This vest has 1 open pocket with 4 additional pencil slots and 1 phone/radio pocket with a front closure. Vests are sold in packages of 12.

SKU	DESCRIPTION
SV-62M	Medium
SV-62L	Large
SV-62XL	X-Large
SV-622X	XX-Large
SV-623X	XXX-Large



### 3M™ Clear Polycarbonate Face Shields

Standard size molded general-purpose polycarbonate face shields offer high-impact face protection. Face shields mount quickly to any 3M™ headgear without tools, snaps, or cams. Protective eyewear is required and sold separately.

SKU	DESCRIPTION
FC-100	3M™ Clear Polycarbonate Face shield



### Clear Universal Sideshields

VisionAid™ SideShields by Radians® are a quick and inexpensive way of supplying additional protection to visitors and employees wearing personal prescription eyewear. Flexible sideshields are engineered to fit all types of eyewear by easily attaching to temples and fronts.

SKU	DESCRIPTION
SG-700	Radians® VisionAid™ SideShields

# Spray Foam Accessories



220000

## GSP Spray Foam Solvents

GSP USA's products are highly effective, ECO Friendly, non-HAPs, comply with CA PROP 65, and, above all, do not contain NMP (N-Methyl-2-Pyrrolidone) listed on CA PROP 65, HAPs, and many other Toxic Substances Lists. All products are manufactured in the USA.

SKU	DESCRIPTION
220000	CIRR D BOND™ Crystallized Isocyanates & Resin Remover, 1 Gallon
220001	Surf X™ Flush Polyurethane Foam, Resin & Coating Remover, 1 Gallon
220002	NZD ISO Flush™ Isocyanates Cleaner and Neutralizer, 1 Gallon
220003	SurfaLube™ Equipment Storage Fluid, 1 Gallon
220004	SurfaSeal™ BioBased Lubricant, 1 Gallon



## Chem-Trend® Spray Foam Remover Mold Cleaner

Chem-Trend® mold cleaners help in the finish cleaning and removal of stubborn deposits from the mold to bring it to proper production standards. These highly-effective cleaners attack buildup and can provide a grease-free surface for molding.

SKU	DESCRIPTION
482809	5 gal. Bucket



## Chem-Trend® Spray Foam Release

Insulation release acts as an effective barrier coat to keep overspray of polyurethane foam insulation from adhering to items such as spray equipment, tub and shower stalls, and other non-porous surfaces. Chem-Trend® spray foam release is packaged with 12 cans per case.

SKU	DESCRIPTION	QUANTITY
IR-100	Insulation Release, 10.5 oz.	12 Cans/Case

## 4 WAYS TO ORDER!

Visit us online for monthly specials

	Phone	800-343-4446 260-353-3600	8 AM–5 PM EST
	Fax	800-518-4446 260-353-3826	24 HR
	Web	jrproductsinc.com	24 HR
	Pick Up	Stop by your local J&R Products or Cameron Ashley location (Call ahead to check availability)	



### Foam Knives

This spray foam removal tool is “The finest spray foam insulation removal knife in the industry”. Our handles were designed to reduce the risk of hands accidentally sliding forward across the blade, in the event of a sudden stop while cutting. They have high impact-resistant handles and extremely sharp

replaceable serrated edge blades. Our soft foam knives can be sharpened a number of times before needing to be replaced. “SHORTY”, with its 11 in. cutting edge, is perfect for all those hard to get to spaces in closets and corners. !!!WARNING!!! These knives are extremely sharp. You must use caution, and wear protective clothing and good quality heavy-duty gloves when handling this tool. Knives are sold individually.

SKU	DESCRIPTION	QUANTITY
HS-011	11 in. Blade	1
HS-029	29 in. Blade	1



### Curry Combs

Curry comb foam scrapers come as a 2-comb set (1–4 in. and 1–5 in.) with reversible heads. Reversible curry combs are assembled with non-rusting spacers and riveted together for an attractive, durable comb. A tension spring snugs the comb firmly on the bright metal shank pin

to permanently attach the Grip-Fit® polypropylene handle to the comb. The shank pin allows the comb to reverse easily on the handle. The finished combs are lacquer dipped to give them a bright, durable finish. Curry combs are sold as a set only.

SKU	DESCRIPTION
CC-045	Curry Comb Foam Scrapers



### Wall Scraper

The wall scraper offers more flexibility when it comes to removing excess foam from wall studs and ceiling joists. The wall scraper is 17 in. long and has a reversible 2-½ in. cutting surface that can be sharpened many times before needing to be replaced.

SKU	DESCRIPTION
FSS-017	17 in. Wall Scraper



### Super Shear

Your dream came true for trimming spray foam! This saw will cut open and closed-cell foam with great efficiency. The 1-½ in. stroke allows you to cut at a slower RPM, which reduces vibration while still getting excellent cutting speed.

SKU	DESCRIPTION
BLADES WILL ONLY WORK WITH SS-100	
SS-100	Super Shear V2, Foam Saw Only
SS-018	Super Shear, Closed-Cell, 30 in.
SS-027	Super Shear, Open-Cell, 27 in.



### Foam Saws

These DEWALT® and Milwaukee® reciprocating saws come corded, and also come with J&R Product's new foam saw adapter to attach your own saw blades. Choose blades for either open-cell foam or closed-cell foam. See website for complete details.

SKU	DESCRIPTION
BLADES WILL ONLY WORK WITH FZ-101 & FZ-102	
FZ-101	Milwaukee® 12 amp Corded Saw with BL-100 Foam Saw Adapter
FZ-102	DEWALT® Reciprocating Saw with Foam Blade Adapter
FB-024	Foam Blade for Open-Cell Foam, 24 in.
FB-030	Foam Blade for Closed-Cell Foam, 30 in.
FB-036	Foam Blade for Open-Cell Foam, 36 in.
BL-100	Blade Adapter for Milwaukee® Corded Saw



# Spray Foam Kits & Accessories



## HandiFoam® Quick Cure E84 Class 1(A)

A two-part closed-cell foam kit that is used to fill and insulate large voids or surfaces, and comes complete with gun, hoses and eight tips.

SKU	DESCRIPTION	HOSE LENGTH	COVERAGE
481393	II-105 HandiFoam®	9 ft. 5 in.	92 bd. ft.
88314	II-205 HandiFoam®	9 ft. 5 in.	179 bd. ft.
89014	II-605 HandiFoam®	15 ft.	529 bd. ft.



## HandiFoam® Cylinder Foam Kits

These UL Classified polyurethane foam kits meet ASTM E-84 Flame Spread requirements. Cylinder foams are dispensed with a dispensing wand or professional dispensing unit. Each kit contains closed-cell foam with a 8 ft. 6 in. hose and a 6 in. brass nozzle.



FS-011

SKU	DESCRIPTION
FS-016	16 lb. Kit with Accessories, 12.5 bd. ft. (yields 31,347 ft. at ¼ in. bead)
FS-011	Hose Assembly, 16 lb.



## HandiFoam® & Handi-Flow® Disposable Kit Accessories

Accessories for all HandiFoam® 2-part spray kits.

SKU	DESCRIPTION	QUANTITY
FS-181	Handi-Gun® Trigger Stop Metering Clips	3/Pack
FS-250	Gun, 9 ft. Hose	—
FS-252	Gun, 15 ft. Hose	—
FS-650G	Gun, 25 ft. Hose	—

Respirators and protective clothing are needed when applying spray foam.



## HandiFoam® Channel Fill

A two-part closed-cell foam kit that is used to fill and insulate difficult, intricate voids and channels, and comes complete with gun, hose and dispensing tips.

SKU	DESCRIPTION	HOSE LENGTH
FS-200CF	12 cu. ft.	10 ft.



## HandiFoam® 2-Part Spray Kit Accessories

Accessories for all HandiFoam® 2-part spray kits.

SKU	DESCRIPTION	QUANTITY
FS-255	Combo Spray Tips (5 Fan & 3 Cone)	8/Pack
89400	ColorWise® Snap-Tip nozzles	10/Pack
89401	ColorWise® Snap-Tip nozzles	25/Pack



Snap-Tip Fan Spray/Cone Spray Nozzle

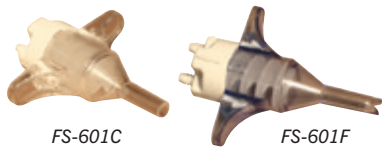
## BOSS® 2 Part HFO Foam

BOSS® 2-Part HFO Foam is a high-quality 2-component polyurethane spray foam for filling and sealing in professional and industrial applications. It is supplied in two portable, disposable and pressurized cylinders requiring no external power source, no extra pressure and no pumps.

SKU	DESCRIPTION	HOSE LENGTH	COVERAGE
482820	Boss 200 BF HFO Spray Foam GHA	15 ft.	185 bd. ft.
482821	Boss 600 BF HFO Sprayz Foam Kit GHA	15 ft.	615 bd. ft.



FS-601

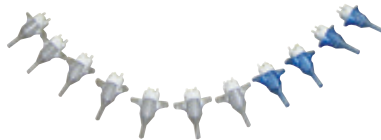


FS-601C

FS-601F



FS-204



### Froth-Pak™ Foam Insulation

This 2-part spray foam comes in both 210 bd. ft. and 650 bd. ft. kits. It can be used to insulate, fill wall cavities, deaden sound and more. Kits come complete with gun, hoses and tips. This foam is E-84 Class 1 rated. FS-204 has 4 fan tips and 6 cone tips. FS-601 has 4 fan tips and 8 cone tips.

SKU	DESCRIPTION	HOSE LENGTH	QUANTITY
FS-204	Froth-Pak™ 210 Foam Insulation Kit	9 ft.	—
FS-601	Froth-Pak™ 650 Foam Insulation Kit	30 ft.	—
FS-601G	Gun with Hose	15 ft.	—
FS-602G	Gun with Hose	30 ft.	—
FS-601C	Foam Kit Cone Nozzles	—	25/Pack
FS-601F	Foam Kit Fan Nozzles	—	25/Pack



### No-Burn® Plus ThB Intumescent Coating

No-Burn® Plus ThB is a water-based thin film intumescent coating when exposed to high temperatures and flame, intumesces creating a char-barrier protecting treated substrates from fire. See website for complete details.

SKU	DESCRIPTION
NB-1501	Gray, 5 gal.
NB-1500	White, 5 gal.



### DC315 Thermal

DC315 is an intumescent coating for spray polyurethane foam (SPF) and provides an alternative 15 or 20 minute thermal barrier. It is tested and evaluated in the USA by UL and ICC-ES AND Canada by ULC and CCMC. See the SDS and TDS on our website.

SKU	DESCRIPTION
DC-315	15 Minute Thermal Barrier, White
DC-315B	15 Minute Thermal Barrier, Black
DC-315G	15 Minute Thermal Barrier, Grey



HW-003



HW-004

### Heater Wraps for Refill Systems

These 110V heater wraps are used to help keep your cylinders warm at all times for optimal spraying coverage. Both heater wraps are sets of 2; hoods are sold separately.

SKU	DESCRIPTION	QUANTITY
HW-003	For System 17 & 27 Refill Units	2
HW-004	For System 60, 100, & 55 gal. Drum	2



HW-002

HW-001

### Heater Wraps for Foam Kits

These 110V heater wraps are used to help keep your cylinders warm at all times for optimal spraying coverage. Two of the large wraps are needed for the 600 bd. ft. kits. All smaller kits will fit in the medium size wrap and are sold individually.

SKU	DESCRIPTION	HOSE LENGTH
HW-001	Medium	18 in. x 18 in. x 18 in., for Foam Kits up to 210 bd. ft.
HW-002	Large	15 in. x 15 in. x 24 in., for Foam Kits up to 620 bd. ft.



PW-005

PW-002

PH-005

### Pail Warmers

These 110V warmer wraps are used to keep foam, mastic and other items warm at all times. The PW-002 will work on 10 lb. and 16 lb. foam kits as well as 1 gal. and 2 gal. pails. The PH-005 and PW-005 will work with 5 gal. pails and 600 bd. ft. foam kits.

SKU	DESCRIPTION	HOSE LENGTH
PW-002	2 gal.	8 in. High x 29 in. Long
PH-005	5 gal.	16 in. High x 47 in. Long
PW-005	5 gal.	11-½ in. High x 41 in. Long

# 4 WAYS TO ORDER!

Visit us online for monthly specials



Phone

800-343-4446  
260-353-3600  
8 AM-5 PM EST



Fax

24 HR

800-518-4446  
260-353-3826



Web

24 HR

[jrproductsinc.com](http://jrproductsinc.com)

Visit us online for daily specials



Pick Up

Stop by your local  
J&R Products or  
Cameron Ashley  
location

(Call ahead to check availability!)

# Foam Dispensing Guns, Accessories, Gun Cleaners & Gun Foam

## Dispensing Guns

SKU	DESCRIPTION
88056	TYTAN Pro Control Foam Gun
01035	TYTAN, 22 in. Barrel
482602	BOSS® Foam Gun, Threaded Metal Tip, 7-½ in. Barrel
482610	BOSS® Foam Gun, Plastic Tip, 40 in.
FGE-100	Foam Gun Extensions, 8 in.
FS-108	TYTAN Graphite Applicator, 8 in. Barrel
FS-262	Bottom Load Foam Gun with Valve, 6 in. Barrel
FS-266	TYTAN Eco Foam Gun, 8 in. Barrel
FS-267	Top Load Steel Foam Gun, 6 in. Barrel
FS-271	Long Barrel Steel Top Load Gun, 30 in. Barrel
FS-278	J&R Long Barrel Steel Foam Gun, 30 in. Barrel
01034	TYTAN Long Barrel Foam Gun, 32 in. Barrel
FS-390	TYTAN Long Barrel Applicator, 39 in. Barrel



88056



01027 22 in. Barrel



482602 7-½ in. Barrel



482610 40 in. Barrel



FGE-100 8 in.



FS-266 8 in. Barrel



FS-108 8 in. Barrel



FS-262 6 in. Barrel  
(Hose not included)



FS-267 6 in. Barrel



FS-271 30 in. Barrel



FS-278 30 in. Barrel



FS-200



FS-201



88077

### Gasket Gun Foam & Barrels

Great Stuff Pro™ Gasket is a one-component, water-based foam applied to the top plate, bottom plate and around the perimeter of all rough openings. It is specially designed to create a flexible, compressible, air seal that will stay in place when drywall is installed. Unlike traditional polyurethane-based foam sealants, this water-based solution and the specially designed gun can be easily cleaned with a garden hose and the included cleanout adapter.\*

Tytan Gasket Foam creates a flexible and long lasting seal between lumber and drywall, increasing insulation parameters. It dries to a flexible and durable gasket foam which compresses to enable a flat, uniform drywall plane.

SKU	DESCRIPTION
FS-200	Dow Great Stuff Pro™ Drywall Gasket Gun Foam, 18 oz.
FS-201	Great Stuff Pro™ Drywall Gasket Foam Gun, 7-3/4 in. Barrel
88077	TYTAN Gasket Foam, 14 oz.

\*Follow all directions for proper cleaning and disposal. Use only the special blue-handled gun Great Stuff Pro™ Gasket Dispensing Gun is to be used with Great Stuff Pro™ Gasket. Do not use other Great Stuff Pro™ products in this gun.



FS-195



FS-33424

### Window & Door Foam

These minimal expansion foams are used around windows and doors and do not exert harmful pressure which can lead to bowing of frames. These foams are packaged with 12 cans per case.

SKU	DESCRIPTION
FS-195	TYTAN Window & Door Gun Foam, 24 oz.
FS-33424	BOSS® 334 Minimal Expanding Foam Gun Grade



### TYTAN Subfloor Pro Adhesive

Innovative collapsing gel technology foams up after being dispensed and then collapses into a gel to provide a strong adhesive with high yield!

SKU	DESCRIPTION
01029	TYTAN Subfloor Pro Adhesive, 29 oz.



### TYTAN Outdoor & Auto Black Foam

This one-component black polyurethane foam is specially formulated to fill, insulate and seal gaps, cracks and openings, blend in with automotive undercarriages and use in outdoor landscaping applications. It is environmentally friendly, contains no CFC's or HCFC's and it is UL listed.

SKU	DESCRIPTION
FS-197	TYTAN Outdoor & Auto Black Foam, 25 oz.



FS-196



FS-335

### Foam Gun Cleaner

This cleaner is used to dissolve uncured foam, clean dispensing guns and as a general cleaning product. It comes packaged with 12 cans per case.

SKU	DESCRIPTION
FS-196	TYTAN Foam Cleaner, 12 oz.
FS-335	BOSS® 335 Gun Foam Cleaner



### TYTAN Drywall Adhesive

Engineered to be used on vertical surfaces, this adhesive applies as a foam and stays as a foam while it cures and expands to fill the gap between the studs and drywall. Establishes a solid bond that prevents screw pops and eliminates customer callbacks, while also sealing air penetration points behind the wall.

SKU	DESCRIPTION
01031	TYTAN Fill All Gun Foam, 29 oz.



FS-193



FS-812

### Fireblock Foam

These foams are designed to seal, fill, insulate and stop air infiltration as a fireblock. Fireblock is orange in color so it is easily recognizable for inspectors, and comes packaged with 12 cans per case.

SKU	DESCRIPTION
FS-193	TYTAN Fire Block Extreme PRO Gun Foam, Maximum Expansion, 24 oz.
FS-812	BOSS® 812 Fire Block Foam Gun Grade, Minimum Expansion



FS-184



FS-336

### Extreme Climate Foam

Polyurethane Gun Foam Sealant is a multipurpose UL classified one-component polyurethane foam for filling and sealing around gaps, cracks, pipes, penetrations, etc. It comes packaged with 12 cans per case.

SKU	DESCRIPTION
FS-184	Soudafoam All Season Gun Foam, 24 oz.
FS-336	BOSS® 336 Extreme Weather Foam Gun Grade, 24 oz.
88050	TYTAN Extreme Temp Insulating Foam Sealant, 24 oz.



### 60 Second Foam Adhesive

General purpose, fast-tack 60 second foam adhesive. Provides excellent bond strength when using a variety of construction materials, including wood, metal, foam and concrete, without degrading or deforming XPS and EPS polystyrene foams.

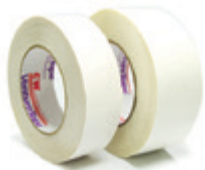
SKU	DESCRIPTION
88057	TYTAN Foam Bond 60, 24 oz.



### Embossed Vinyl Tape

This thin, but strong, premium white and black vinyl tape is shrink-resistant and used for seaming vinyl-faced fiberglass insulation and for water heater blanket installation. HJ-100 has tear off backing. HJ-102 does not have tear off backing.

SKU	MFG. SKU	COLOR	QUANTITY	SIZE
HJ-100	460	White	16/Case	3 in. x 50 yds.
HJ-102	—	White	16/Case	3 in. x 50 yds.



### Double-Faced Tape

This is a self-sealing lap tape for use in extreme temperatures. It is coated on both sides for a quick stick with excellent adhesion.

SKU	MFG. SKU	QUANTITY	SIZE
DT-260	514CW-D/C	24/Case	1-½ in. x 60 yds.
DT-261	514CW-D/C	24/Case	2 in. x 60 yds.

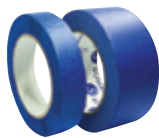


Hardcast

### Foil-Grip™ Tape

Foil-Grip™ is a pressure-sensitive duct joint sealer and general-purpose sealer in a roll. It also provides a water-resistant duct wrap vapor barrier. The sealant stays supple and resists releasing.

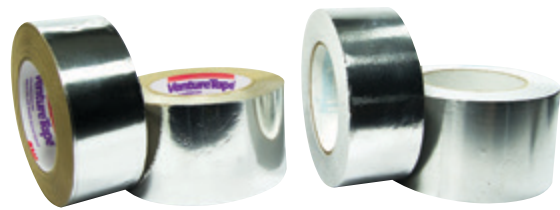
SKU	SIZE	QUANTITY
TG-200	2 in. x 100 ft.	24/Case
TG-300	3 in. x 100 ft.	16/Case
TG-400	4 in. x 100 ft.	12/Case



### Blue Painters 5.2 mil Tape

This masking tape is UV-resistant and painters grade, with solvent based rubber, ADH clean removal and blue crepe paper. It is 5.2 mil thick.

SKU	MFG. SKU	SIZE	QUANTITY
PT-260	—	2 in. x 60 yds.	32 Rolls/Case



### Foil Tape

This tape is UL classified 2 mil with high-tack adhesive and superior conformability for sealing insulation and foil-faced sheathing.

SKU	MFG. SKU	DESCRIPTION	SIZE	QUANTITY
TF-250	1520CW	3M™ Venture Tape™	2 in. x 50 yds.	24/Case
TF-350	1520CW	3M™ Venture Tape™	3 in. x 50 yds.	16/Case
TF-350W	1558HT	3M™ Venture Tape™, White	72 mm x 45.7 m	16/Case
TF-351	—	Ideal Tape®	3 in. x 50 yds.	16/Case



### Masking Tape

These masking tapes are multipurpose utility grade tapes.

SKU	MFG. SKU	SIZE	QUANTITY
TM-260	—	2 in. x 60 yds.	24/Case



### Alum-a-Grip™ Tape

Alum-a-Grip™ is a premium indoor or outdoor duct sealer that provides an aggressive water-resistant grip. The sealant is made from 100% solids so that it stays supple and resists releasing.

SKU	SIZE	QUANTITY
TA-200	2 in. x 50 ft.	24/Case
TA-300	3 in. x 50 ft.	16/Case



### 3M™ Venture Tape™ Double Coated PET Tape 587

3M™ Venture Tape™ Double Coated PET Tape 587 is comprised of a polyester (PET) film tape coated on both sides with a high coat weight of acrylic adhesive. Designed specifically for tough bonding applications, this tape will permanently adhere to a variety of difficult substrates, including high-energy plastics, cloth, metals and composite materials. See our website for more details.

SKU	SIZE
TV-255	2 in. x 55 yds.



### Polyethylene White Tape

Polyethylene white tape is used to seal joints and seams against moisture and vapor with plastic types of insulation.

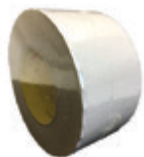
SKU	MFG. SKU	SIZE	QUANTITY
PT-201	Polyethylene White Tape	2 in. x 60 yds.	24/Case



### Sheathing Tape/Housewrap Tape

These tapes are used as a vapor barrier seal on housewrap or exterior insulation. 481505 is a strong polypropylene tape with a special cold weather adhesive system that maintains adhesive integrity to -10°F.

SKU	COLOR	SIZE	QUANTITY
481505	Red	1-7/8 in. x 54 yds.	24/Case
HT-255	Red	2 in. x 55 yds.	24/Case
HT-256	White	2 in. x 55 yds.	24/Case



### Polypropylene Facing Tape

This facing tape is tri-directionally reinforced and U.L. listed, with white polypropylene/scrim/kraft lamination. It provides a quick stick in all weather conditions.

SKU	MFG. SKU	SIZE	QUANTITY
TP-350	1537 WMP-VR/CW	3 in. x 50 yds.	16/Case



### 3 in. x 60 Yard Printed Foil Tape 1581A

3M™ Venture Tape™ UL181A-P aluminum foil tape 1581A is a 4.0 mil, high-strength aluminum foil tape coated with a cold weather adhesive. The aluminum foil backing is malleable and conforms well around corners and to irregular surfaces. This tape provides

an excellent vapor seal in various duct board sealing applications. 3M™ Venture Tape™ UL181A-P Aluminum Foil Tape 1581A is UL181A-P and UL181B-FX Listed. It is also ULC S102 Classified (Flame/Smoke 0/0). See our website for more details.

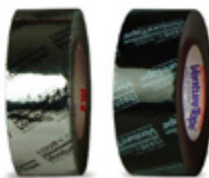
SKU	MFG. SKU	SIZE	QUANTITY
TF-360P	1581A	3 in. x 60 yds.	16/Case



### Duct Tape

These waterproof duct tapes are cloth backed 9-1/2 mil with high, quick adhesion. They are excellent for insulation, batt sealing, hose wrapping and other general purposes.

SKU	COLOR	SIZE	QUANTITY
TD-180	Gray	2 in. x 60 yds.	24/Case
TD-182	Red	2 in. x 60 yds.	24/Case



### Flex Duct Tape UL Printed

These tapes have a polypropylene film with an acrylic cold weather adhesive. They are UL printed and meet all state building codes requiring UL181-FX.

SKU	MFG. SKU	COLOR	SIZE	QUANTITY
FT-220S	1599B-Silver	Silver	2 in. x 120 yds.	24/Case
FT-220B	1599B-Black	Black	2 in. x 120 yds.	24/Case
FT-220C	1599-Clear	Clear	2 in. x 120 yds.	24/Case



### Kraft Paper Tape

This 6.5 mil tape has excellent adhesion that bonds well in low and high temperatures.

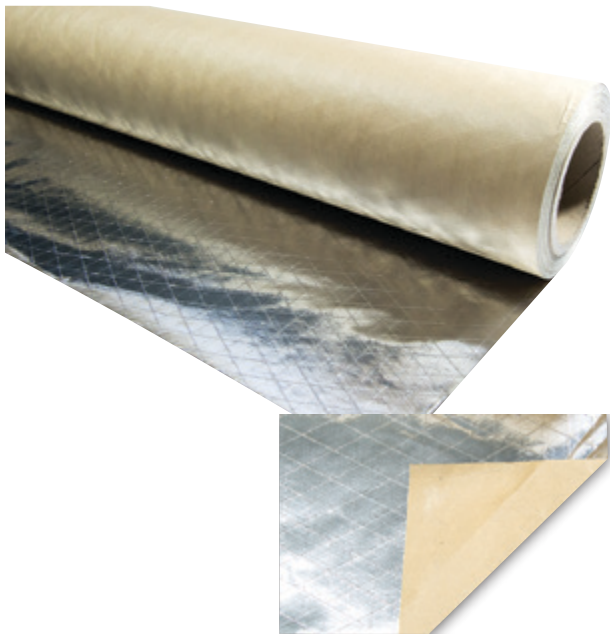
SKU	SIZE	QUANTITY
TP-200	2 in. x 60 yds.	24/Case



### 3 in. x 50 Yard Metal Building Facing White 3M™ Venture Tape™

3M™ Venture Tape™ metal building facing tape 1531CW is a 10.7 mil tri-directionally reinforced, metallized polypropylene film/scrim/kraft-faced tape. It combines a quick stick at normal temperatures with superior low-temperature performance and conforms well to uneven, irregular and curved surfaces.

SKU	MFG. SKU	SIZE
TV-350	1531CW	3 in. x 50 yds.



### FSK Paper

FSK paper is an insulation facing material used for vapor barrier paper over plain fiberglass and other insulation products. Both perforated and non-perforated options have a ASTM E84: 5/10 Flame/Smoke Rating.

SKU	DESCRIPTION
FSK-200	50 in. x 200 ft., Non-Perforated
FSK-600	50 in. x 600 ft., Non-Perforated
FSK-300P	52 in. x 300 ft., Perforated

### WMP Paper

Uncoated WMPVR paper is a 3 x 4 traditionally reinforced, UL listed white polypropylene/scrim/kraft/lamination vapor barrier paper for use over plain fiberglass. It is non-perforated.

SKU	DESCRIPTION
WMP-420	48 in. x 200 ft
WMP-540	54 in. x 200 ft



### Aerosol Adhesives

3M™ Super 77™ multipurpose spray adhesive allows up to ten minutes to make a bond. It has two actuators: one for a standard pattern and one for a wide spray pattern. 3M™ Hi-Strength 90 spray adhesive is formulated for strength and quick setup. It sprays right where you want it with no misting. Both adhesives provide strong bonding for insulation and foam and are packaged with 12 per case.

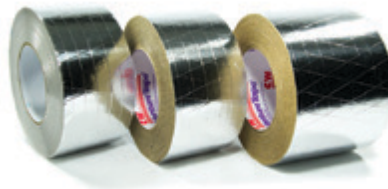
SKU	DESCRIPTION	QUANTITY
AA-770	3M™ Super 77™ Multipurpose Spray Adhesive, 13.44 oz.	12/Case
AA-900	3M™ Hi-Strength 90 Spray Adhesive, 17.6 oz.	12/Case



### RCD Corporation® #52 Spray Adhesive®

RCD Corporation® #52 Spray Adhesive® is a fast tacking, high-strength adhesive that is packaged with 12 per case.

SKU	DESCRIPTION	QUANTITY
AA-052	RDC® #52 Aerosol Adhesive	12/Case



### FSK Tape

This 10-½ mil tape is a foil and fiberglass scrim laminate designed for sealing scrim-faced duct insulation. It is used where extra strength beyond regular foil tape is needed.

SKU	DESCRIPTION	SIZE	QUANTITY
TK-350	3M™ Venture Tape™	3 in. x 50 yds.	16/Case
TK-450	3M™ Venture Tape™	4 in. x 50 yds.	12/Case
TK-351	Ideal Tape®	3 in. x 50 yds.	16/Case



### BOSS® 635 12 oz. Contact/Spray Adhesive

BOSS® 635 contact/spray adhesive is the one adhesive that is truly all purpose. BOSS® 635 contact/spray adhesive combines a uniform misting spray pattern with super high solids to create a fast tacking and high bond strength product capable of handling virtually any light or heavy-duty job.

SKU	DESCRIPTION
AA-050	BOSS® 635 Contact/Spray Adhesive, 12 oz.





CS-360 CS-361 CS-363 CS-365

### 100% Silicone Caulk

These caulks are ideal for indoor and outdoor use, and meet FDA regulation #21 CFR 177.2600 and Federal Specs TT-S-001543A, TT-S-00230C, and ASTM C920-86. All of these silicone caulks come with 4-½ in. screw on tips.

SKU	DESCRIPTION	QUANTITY
CS-360	ASI 502 100% Silicone Caulk, Clear	24/Case
CS-361	ASI 502 100% Silicone Caulk, White	24/Case
CS-363	ASI 502 100% Silicone Caulk, Aluminum	24/Case
CS-365	ASI 502 100% Silicone Caulk, Black	24/Case



CS-063 CS-105 CS-109

### Acrylic Caulk with Silicone

Premium acrylic caulk formulation uses silicone for increased flexibility and extended life. See manufacturer warranties for complete information. These caulks are great for indoor work as they are low-odor. They are paintable, non-staining and mildew-resistant. Also, they clean up easily with water and meet ASTM C834-76 specifications.

SKU	DESCRIPTION	QUANTITY
CS-063	BOSS® 360 35 Year Sealant Siliconized Latex Caulk	12/Case
CS-105	Red Devil® Lifetime® Acrylic Sealant Plus Silicone, Clear, 40 yr.	12/Case
CS-109	Red Devil® RD PRO® Siliconized Acrylic Caulk, White, 40 yr.	12/Case



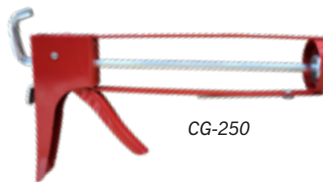
CS-100 CS-101 CS-355 481005

### Acrylic Latex Painter's Caulk

These caulks are mildew-resistant, paintable, and adhere to most surfaces. Each caulk comes with a limited warranty\*.

SKU	DESCRIPTION	QUANTITY
CS-100	Red Devil® Speed Demon® Painter's Caulk, White, 5 yr.	12/Case
CS-101	Red Devil® Painter's Caulk, White, 25 yr.	12/Case
CS-355	BOSS® 355 General Purpose Latex Caulk, 10.1 fl. oz., 7 yr.	12/Case
481005	BOSS® 357 Painters Latex Caulk, 20 yr.	12/Case

\*See manufacturer warranty for complete information



CG-250

### Caulk Guns

These ½ gal. ratchet design guns will provide years of constant use and can be used with all grades of caulks, sealants and adhesives. The lightweight and compact skeleton gun is made of epoxy coated tubed steel with a hex plunger which ensures positive application control for speed efficiency. Colors may vary.

SKU	DESCRIPTION
CG-250	Skeleton Caulk Gun



CS-370

### 50-Year High-Temperature 100% Silicone Caulk

High-performance formula caulk gives a permanent waterproof seal, stays flexible when cured and won't shrink or peel. It is unaffected by moisture or temperature changes from -70°—+605°F and meets Federal Specs TTS-01543A and TTS-00230C Type 2.

SKU	DESCRIPTION	QUANTITY
CS-370	ASI 600 High Temperature RTV Silicone, Red, 10.2 fl. oz.	24/Case



### BOSS® Intumescent Latex FireStop Caulk

This caulk meets ASTM-E-814 specifications. It is used to firestop around pipes, vents, ducts, electrical wiring and other penetrations, and comes packaged with 12 tubes per case.

SKU	DESCRIPTION	QUANTITY
CS-255	BOSS® Intumescent Latex Firestop Caulk, Red, 10.1 fl. oz.	12/Case



CS-254



CS-136

### Fire Mortar

Made to withstand temperatures up to 1400°F, these mortars are formulated for repairing chimneys, fireplaces and high-temperature appliances. These fire mortars are tested to ASTM-E-136 and are packaged with 12 per case.

SKU	DESCRIPTION	QUANTITY
CS-254	BOSS® 136 Fireblock Draftstop Sealant, Red, 10.1 fl. oz.	12/Case
CS-136	Fire Seal Fireblocking Caulk, Red, 10.1 fl. oz.	12/Case



### Closed-Cell Backer Rod

Backer rod is sold in a variety of diameters and is a round, flexible, continuous length of closed-cell, extruded polyethylene. Backer rod is used with silicone, elastomeric and other cold-applied sealants and caulks. It is used around doors, windows and other construction joints to either reduce the amount of caulking required or to produce an ideal joint shape.

SKU	DESCRIPTION	QUANTITY
BR-025	¼ in.	6400 lf./Spool
BR-038	⅜ in.	3600 lf./Spool
BR-050	½ in.	2500 lf./Spool
BR-062	⅝ in.	1550 lf./Spool
BR-075	¾ in.	1100 lf./Spool
BR-088	⅞ in.	850 lf./Spool
BR-010	1 in.	550 lf./Spool
BR-020	2 in.	252 lf./Spool



### Flex-Mend™

A polyethylene film meeting all requirements for use as bottom board by the mobile home industry. It has been solid coated with a specially formulated high-tech adhesive and applies easily.

SKU	DESCRIPTION	QUANTITY
FM-400	Flex-Mend™ Tape, 4 in. x 180 ft.	12/Case
FM-600	Flex-Mend™ Tape, 6 in. x 180 ft.	12/Case
FM-025	Flex-Mend™, 28 in. x 25 ft.	20/Case
FM-050	Flex-Mend™, 28 in. x 50 ft.	12/Case
FM-100	Flex-Mend™, 28 in. x 100 ft.	6/Case



MB-002

### RCD Corporation® Mastic Brushes

These brushes have natural bristles with wooden handles, which make them ideal for applying mastics and adhesives to all types of substrates.

SKU	DESCRIPTION	QUANTITY
MB-002	RCD Corporation® Plenum Brushes, 2 in.	12/Box



51578

### CleanSeal™

This caulk is infused with anti-mold enzymes that prevent mold growth before it starts. CleanSeal patented technology is safe for your home, and the enzymes are environmentally-friendly. It features a resilient, super-adhesive grip and ultra-elastic flexibility.

SKU	DESCRIPTION	QUANTITY
51578	White, 6 oz.	12/Case



51568

### Big Stretch® Water-Based Sealant

Big Stretch® high-performance water-based sealant's powerful adhesion and extreme elasticity will stick, twist, bend, compress and stretch to more than 500% of its original size. Can be used for: windows and doors, siding and trim, vents, soffit, baseboards and crown molding or soundproofing interior walls.

SKU	DESCRIPTION	QUANTITY
51560	Almond, 10.5 fl. oz.	12/Case
51561	Black, 10.5 fl. oz.	12/Case
51562	Clear, 10.5 fl. oz.	12/Case
51563	Dark Brown, 10.5 fl. oz.	12/Case
51564	Gray, 10.5 fl. oz.	12/Case
51556	Ironstone, 10.5 fl. oz.	12/Case
51558	Limestone, 10.5 fl. oz.	12/Case
51557	Pine Green, 10.5 fl. oz.	12/Case
51565	Redwood, 10.5 fl. oz.	12/Case
51559	Slate Gray, 10.5 fl. oz.	12/Case
51566	Tan, 10.5 fl. oz.	12/Case
51568	White, 10.5 fl. oz.	12/Case
51567	Woodtone, 10.5 fl. oz.	12/Case



51570

### Lexel® Elastic Caulk Sealant

Super elastic caulk that moves when the surface moves and leaves a lasting, permanent seal so it doesn't crack, tear or pull away. Lexel® is waterproof immediately and cured sealant is mold and mildew resistant. It is great for bathrooms windows and doors.

SKU	DESCRIPTION	QUANTITY
51570	Clear, 10.5 fl. oz.	12/Case
51571	White, 10.5 fl. oz.	12/Case
51577	Lower VOC Grade, White, 10.5 fl. oz.	12/Case
51574	Squeeze Tube, Clear, 5 fl. oz.	12/Case
51576	Lower VOC Grade Squeeze Tube, White, 5 fl. oz.	12/Case
51573	Squeeze Tube, Clear, 5 fl. oz.	12/Case
51575	Squeeze Tube, White, 5 fl. oz.	12/Case



51653

### Mor-flex® Mortar & Stucco Repair Caulk

Color match textured formula for blending repair on crumbly mortar or cracked stucco.

SKU	DESCRIPTION	QUANTITY
51645	Beige, 10.5 fl. oz.	12/Case
51651	Charcoal, 10.5 fl. oz.	12/Case
51653	Gray, 10.5 fl. oz.	12/Case
51652	Ironstone, 10.5 fl. oz.	12/Case
51654	White, 10.5 fl. oz.	12/Case



### eXact color® Tintable Caulk

eXact color® eliminates the extra step of painting caulk. Can be used for: walls and wallpaper, tile, countertops and backsplashes, wood or vinyl moulding, baseboards and trim, metal, plastic, windows and doors, vinyl and prefinished siding.

SKU	DESCRIPTION	QUANTITY
51579	eXact color® Contractor Pack, 9.5 fl. oz.	6/Case



51646

### Through the Roof!® Elastic Roofing Sealant

Instantly fixes roof leaks. Seal anything that goes Through The Roof!® with permanently elastic clear sealant. Commonly used for: flashing and gutters, shingles and shakes, vents, PVC and ABS vent pipe, skylights, ductwork, chimneys, brick, block, and mortar, roof jacks, cables and air conditioning units.

SKU	DESCRIPTION	QUANTITY
51641	Black, 10.5 fl. oz.	12/Case
51646	Clear, 10.5 fl. oz.	12/Case
51655	Clear, qt.	6/Case
51649	Clear, gal.	2/Case
51642	White, 10.5 fl. oz.	12/Case
51644	Lower VOC Grade, Black, 10.5 fl. oz.	12/Case
51657	Lower VOC Grade, Clear, 10.5 fl. oz.	12/Case
51643	Lower VOC Grade, White, 10.5 fl. oz.	12/Case
51640	With COBRA™ Lap Joint Nozzle, Case of 6, Clear, 10.5 fl. oz.	1 Case



51650

### Slab® Water-Based Sealant

Slab® is specifically formulated for unbreakable adhesion to concrete. The balance of elasticity and adhesion means that your sealant will last for years, not just months. It is also designed to withstand foot and vehicle traffic and spans gaps up to 3 in. wide with no slump.

SKU	DESCRIPTION	QUANTITY
51650	Gray, 10.5 fl. oz.	12/Case



DM-100

### RCD Corporation® #6 Mastic® Low to High Velocity Air Duct Sealant

RCD Corporation® #6 Mastic® Low to High Velocity Air Duct Sealant seals all air duct types including UL listed air ducts, thermal insulation and crawl space vapor retarders. Its color is white and it is easily applied by brush, trowel, palm, extrusion or spray equipment. Store at temperatures between 45°F and 90°F. Apply at temperatures between 35°F and 120°F.

- Weather-Resistant
- Water-Borne
- Low-Odor
- Nonflammable
- UL Listed
- Fiber Reinforced
- Contains Ceramic Microspheres



DM-210

### RCD Corporation® #8 Mastic®

RCD Corporation® #8 Mastic® is formulated for use on commercial sheet metal air ducts and seals all air duct types including UL listed air ducts. Its color is gray and it is easily applied by brush, extrusion or spray equipment. Store at temperatures between 45°F and 90°F. Apply at temperatures between 35°F and 120°F.

- Weather-Resistant
- Water-Borne
- Low-Odor
- Nonflammable
- UL Listed
- Contains Ceramic Microspheres



DM-155

### RCD Corporation® #10 Mastic® Low to High Velocity Air Duct Sealant

RCD Corporation® #10 Mastic® Low to High Velocity Air Duct Sealant seals thermal insulation and all air duct types including UL listed air ducts. Its color is tan and it is easily applied by brush, trowel, palm, extrusion or spray equipment. Store at temperatures between 45°F and 90°F. Apply at temperatures between 35°F and 120°F.

- Weather-Resistant
- Water-Borne
- Low-Odor
- Nonflammable
- UL Listed
- Fiber Reinforced
- Contains Ceramic Microspheres



DM-150

### RCD Corporation® #15 Weather Barrier Coating®

RCD Corporation® #15 Weather Barrier Coating® protects air ducts and thermal insulation exposed to the weather. Prevents the degradation of closed-cell foam insulation on line sets and is used as an exterior coating on buildings to reduce solar heat gain. Its color is bright white and it is easily applied by brush, roller or spray equipment.

- Weather-Resistant
- Water-Borne
- Low-Odor
- Nonflammable
- 80% Solar Reflectance Value

SKU	DESCRIPTION
DM-100	#6 Mastic® Low to High Velocity Air Duct Sealant, White, 1 gal.
DM-200	#6 Mastic® Low to High Velocity Air Duct Sealant, White, 2 gal.
DM-210	#8 Mastic®, Gray, 1 gal.
DM-155	#10 Mastic® Low to High Velocity Air Duct Sealant, Tan, 1 gal.
DM-150	#15 Weather Barrier Coating®, Bright White, 1 gal. (Special Order, Minimum Quantity Order Required)



### RCD Corporation Glasscoat® Fiberglass Mesh

RCD Corporation Glasscoat® is a white woven fiberglass reinforcing mesh (scrim) that is coated on one side with adhesive. It reinforces the joints and seams of air ducts and must be used to comply with UL181A-M standard. Rolls are individually wrapped and labeled.

SKU	DESCRIPTION	QUANTITY
DM-110	RCD Corporation Glasscoat® Fiberglass Mesh, White, 3 in. x 180 ft.	24/Case



### Foam & Vinyl Door Weatherstrips

This attractive and durable door weatherstrip is unaffected by cold temperatures. It has an easy do-it-yourself installation with screws included. Also, it has slotted holes for simple adjustments. Each kit contains two 7 ft. pieces, one 3 ft. piece and a screw pack. This weatherstrip comes packaged with 25 per case.

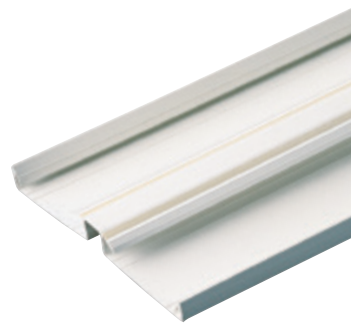
SKU	FOAM	QUANTITY
80251	Tan, 1-3/4 in. Wide	25/Case
80250	White, 1-3/4 in. Wide	25/Case



### Foam & PVC Door Stop/Vinyl Covered Foam Weatherstrips

This all in one PVC door stop and vinyl covered foam weatherstrip can be used in all applications where wood would be used. Each kit contains two 7 ft. pieces and one 3 ft. piece.

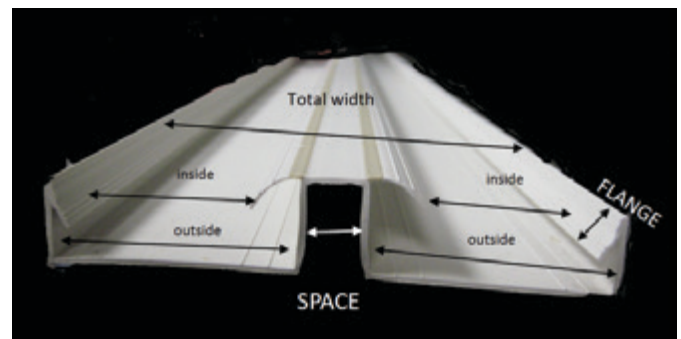
SKU	DESCRIPTION	QUANTITY
481522	Brown, 7/8 in. Wide	15/Case
481524	Brown, 1-3/8 in. Wide	12/Case
481476	White, 7/8 in. Wide	15/Case
481523	White, 1-3/8 in. Wide	12/Case



### Jamb Liners

Jamb liners are designed to modernize double-hung windows for beauty and efficiency. They also recondition and weatherize drafty windows. The “Living Hinge” weatherstrip on the parting bead enables the sash to glide easily while eliminating air infiltration. Each set includes a left and right white vinyl jamb liner and never needs painting. They are packaged with 25 pairs per case.

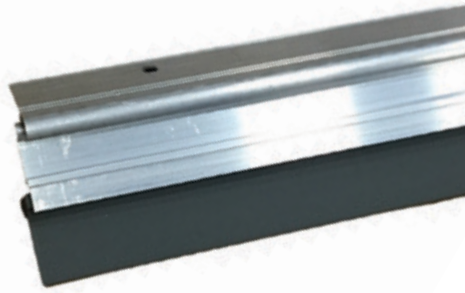
SKU	SIZE	QUANTITY
80738	38 in.	25 Pairs/Case
JL-460	54 in.	25 Pairs/Case
JL-600	70 in.	25 Pairs/Case
80780	80 in.	25 Pairs/Case
JL-100	Lube Sticks	—



### Jamb Liners

- Total width: 3-1/4 in.
- Inside: 1-3/8 in.
- Outside: 1-1/2 in.
- Space: 5/16 in.
- Flange: 1/4 in.

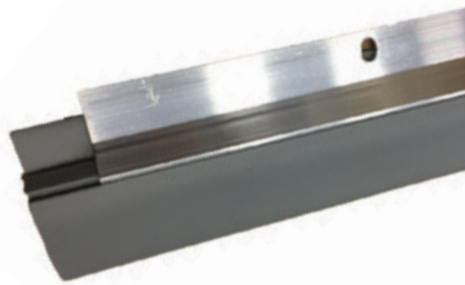
**ORDER ONLINE!** Visit us online for monthly specials • [jrproductsinc.com](http://jrproductsinc.com)



### Automatic Door Sweeps

This residential spring-loaded aluminum door sweep is non-adjustable and non-handed.

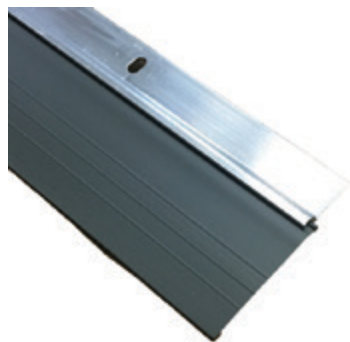
SKU	MFG. SKU	SIZE	QUANTITY
481497	DB019AV36	36 in. Long	6/Case



### Triple Flange Weatherstrips

These aluminum and vinyl door bottom sweeps include three gray vinyl flanges for maximum draft control. Each sweep is 1-3/4 in. high and 36 in. long.

SKU	MFG. SKU	SIZE	QUANTITY
AS-361	DB041AV36	1-3/4 in. x 36 in.	50/Case



### Single Sweep Weatherstrips

These aluminum and vinyl door bottom weatherstrips are 2-1/4 in. high and 36 in. long. They are packaged with 6 per case.

SKU	MFG. SKU	SIZE	QUANTITY
481503	DB038AV36	2-1/4 in. x 36 in.	6/Case



### KC500 Wedge Gray Triangular Gasket & Aluminum Screw-On Door Weatherstrip Sets

This heavy-duty aluminum wedge weatherstrip includes a thermal rubber flap. Slotted application holes make installation easy. The KC500 is fire labeled and UL classified. Wedge weatherstrips are 1-1/4 in. wide and each set includes two 84 in. sides and one 36 in. top. They are packaged with 12 per case.

SKU	MFG. SKU	SIZE	QUANTITY
481361	WS268AV196	1-1/4 in. x (2) 84 in. x 36 in.	12/Case



### Bumper Thresholds

This heavy-duty vinyl bumper threshold is packaged with screws and measures 1-1/4 in. wide by 36 in. long. They are packaged with 24 per case.

SKU	MFG. SKU	DESCRIPTION	SIZE	QUANTITY
481496	BI-0190N	Aluminum	1-1/4 in. x 36 in.	6/Case



### Vinyl Hose

This flexible white vinyl hose is appropriate for most venting uses. It attaches easily to dryer vents or bath fans and is made to be used in temperature ranges from 0°–160°F. Clamps are not included.

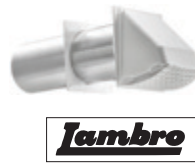
SKU	MFG. SKU	SIZE
481481	215	3 in. x 50 ft.
481482	219	4 in. x 50 ft.



### Flexible Aluminum Ducts

These 4 in. flexible aluminum ducts are 8 ft. long and for use in areas where heat is evident. They are great for range hoods, bath vents or laundry, and are intended for temperatures from 100°–400°F. Hoses are shipped compressed and are packaged with 9 per carton. Clamps are not included.

SKU	MFG. SKU	QUANTITY
481485	302	9/Carton



### Plastic Vent Hoods

These plastic wide mouth hoods include standard tail pieces and lint screens. They have a 4 in. diameter, allow a full 4 in. opening and are dampered. They come packaged with 10 per case. Clamps are not included.

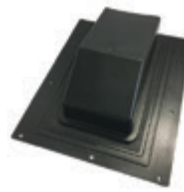
SKU	MFG. SKU	QUANTITY
482603	344P	10/Case



### Bathroom Vent Kits

This roof-installed vent kit is ideal for utility rooms, bathrooms or any area where air venting is vital. It includes a black plastic dampered roof cap with flashing, a 4 in. x 8 ft. flexible aluminum hose, two adjustable clamps and a 3 in. adapter.

SKU	MFG. SKU
481488	403 Vent Kit with Aluminum Hose
481487	403 Vent Kit with Vinyl Hose



### 4 in. Black Roof Caps

These black plastic dampered roof caps come with flashing.

SKU	DESCRIPTION	QUANTITY
481489	4 in. Black Roof Cap	10/Case

## 4 WAYS TO ORDER!

Visit us online for monthly specials

	Phone	800-343-4446 260-353-3600	8 AM–5 PM EST
	Fax	800-518-4446 260-353-3826	24 HR
	Web	jrproductsinc.com	24 HR
	Pick Up	Stop by your local J&R Products or Cameron Ashley location (Call ahead to check availability)	



### Duct Work Clamps

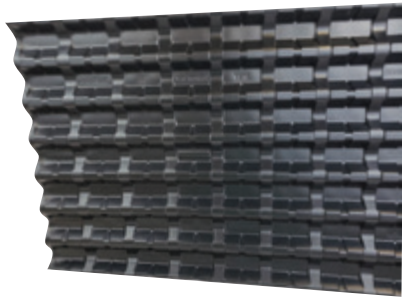
This 4 in. metal screw type clamp joins vinyl hose to pipe, vent hoods, etc. Use with 4 in. vinyl hose only. Duct work clamps come packaged 50 per case.

SKU	MFG. SKU	QUANTITY
481483	234	50/Case



AB-160

AB-240



AVC-241



AV-240



AV-160 & AV-161



AV-241



AVC-240

### AccuVent® Baffles & AccuBlock® Roof Ventilation Systems

AccuVent® baffles prevent wind washing and drifting of insulation and are an excellent measure to help prevent mold and mildew growth. The cathedral ceiling design works equally well in traditional applications also. All models are 100% recycled flame-retardant plastic and are packaged with 50 per bundle.

SKU	BRAND	SIZE	QUANTITY
AB-160	AccuBlock® Starter Strip	14-½ in. x 24-½ in.	50/Bundle
AB-240	AccuBlock® Starter Strip	22-½ in. x 24-½ in.	50/Bundle
AVC-161	AccuVent® Cathedral Ceiling Extension	15 in. x 48 in.	50/Bundle
AVC-241	AccuVent® Cathedral Ceiling Extension	22-½ in. x 48 in.	50/Bundle
AVC-160	AccuVent® Cathedral Ceiling Starter Strip	14-½ in. x 48 in.	50/Bundle
AVC-240	AccuVent® Cathedral Ceiling Starter Strip	22-½ in. x 48 in.	50/Bundle
AV-161	High-Energy AccuVent®	14-½ in. x 50 in.	50/Bundle
AV-241	High-Energy AccuVent®	22-½ in. x 50 in.	50/Bundle
AV-160	Original AccuVent®	14-½ in. x 41 in.	50/Bundle
AV-240	Original AccuVent®	22-½ in. x 41 in.	50/Bundle



### Innovent™ Attic Baffles

In order to achieve maximum efficiency with roof vents, it is necessary that ample intake ventilation be provided. This can be easily accomplished by the installation of these surface-mount under-eave vents. Innovent™ baffles have no off-gassing and are completely cured. They also feature a slight center perforation for an easy split to use for 16 in. on center. They are packaged 100 per bundle with 1,600 per pallet.

SKU	SIZE	QUANTITY
VP-240	22 in. x 48 in.	100/Bundle; 1,600/Pallet





# IF YOU WANT **MORE**, TRY THE **INNOVENT™ PLUS**

**VERSATILE:** works with the original Innovent™ for cathedral ceilings

**CONVENIENT:** staples to the top plate and roof deck for easy installation

**EFFICIENT:** supports soffit ventilation while protecting against wind wash

**ECONOMICAL:** made with flexible, durable polystyrene



**ORDER YOURS TODAY**

[jrproductsinc.com](http://jrproductsinc.com) / 800-343-4446

**SKU 482577**

Product image simulated. Actual product will vary. More information available at [jrproductsinc.com](http://jrproductsinc.com).



### Cardboard Baffles

These baffles are lightweight, easy to install and provide excellent air flow. The side folds on the CB-160, CB-240 and CB-243 are 1-¾ in. and their tails can be either 3 in. or 6 in. The CB-243 side folds are 2 in. and its tail can be 4-½ in., 6-½ in. or 9 in. DB-244 does not have tabs.

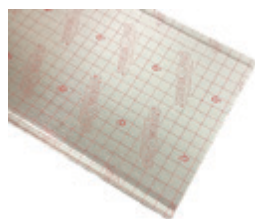
SKU	SIZE	QUANTITY
CB-160	16 in. x 23 in.	50/Bundle; 1500/Pallet
CB-240	24 in. x 23 in.	50/Bundle; 1400/Pallet
CB-243	24 in. x 33 in.	50/Bundle; 700/Pallet
CB-244	24 in. x 44 in.	50/Bundle; 700/Pallet



### The Shoot™ Insulation Installation Systems

This system is designed to be easily installed between open framing to provide a perfect fit and create a form to apply insulation into. They come in 16 in. or 24 in. widths and are 72 in. high. They are packaged with 500 per pallet. Side folds for SH-1672 are 1-½ in. and side folds for SH-2472 are 1-¾ in.

SKU	SIZE	QUANTITY	QUANTITY/PALLET
SH-1672	16 in. x 72 in.	50/Bundle	500
SH-2472	24 in. x 72 in.	25/Bundle	500



### 16 in. x 47-½ in. Standard Fire-Resistant ThermoPan®

ThermoPan® is a high-quality, sheet metal alternative for constructing return air ducts between joists and stud cavities. It consists of corrugated insulation faced with aluminum. ThermoPan® is packaged with 25 per box. See our website for more information.

SKU	SIZE	QUANTITY
TO-160	16 in. x 47-½ in.	25/Box



RT-440 RT-025

### R-Sticks

Staple these R-value rulers to attic joists to get the correct amount of insulation. This universal ruler with 1 in. increments is used with all types of blown insulation. It provides a working gauge of depth for installers and inspectors and peace of mind to owners. It is made of 20 in. or 25 in. long cardboard stock and is packaged with 100 per bundle or 1000 per case.

SKU	SIZE	QUANTITY
RT-440	20 in.	100/Bundle; 1000/Case
RT-025	25 in.	100/Bundle; 1000/Case



### Marking Flags

These orange marking flags can be used for industrial, construction or utility marking purposes. Flags are 2-½ in. x 3-½ in. with 30 in. wire, and they come packaged with 100 per bundle.

SKU	QUANTITY
MR-030	100/Bundle



### Bostitch® H30-6 PowerCrown™ Light Wire Hammer Tackers

This tacker swings like a hammer for tacking and light nailing. It is used for installing batt or sheet insulation. It uses Bostitch® equivalent STCR 2619 ¼ in., ⅝ in. or ¾ in. long staples.

SKU	DESCRIPTION	QUANTITY
BS-306	Bostitch® H30-6 PowerCrown™ Light Wire Hammer Tacker, ⅜ in. Crown	6/Case
ASC-2619	ASC™ Staples, ⅝ in. Long	50 Boxes/Case
BS-3519	Empire™ Staples, ⅝ in. Long	50 Boxes/Case
BS-3142	Spotnails® Staples, ¼ in. Long	20 Boxes/Case
BS-3518	Spotnails® Staples, ⅝ in. Long	20 Boxes/Case
BS-3377	Spotnails® Staples, ¾ in. Long	20 Boxes/Case



### Bostitch® H30-8 PowerCrown™ Hammer Tackers

These compact stapling tools swing like a hammer; this allows one-handed operation for tacking and light nailing where speed is important. They use Bostitch® equivalent STCR 5019 ¼ in. or ⅝ in. long staples.

SKU	DESCRIPTION	QUANTITY
BS-380	Bostitch® H30-8 PowerCrown™ Hammer Tacker, ⅝ in. Crown	6/Case
96409	Advantage® Staples, ⅝ in. Long	20 Boxes/Case
BS-8142	Spotnails® Staples, ¼ in. Long	20 Boxes/Case
BS-8377	Spotnails® Staples, ⅝ in. Long	20 Boxes/Case



### Rapid® Petrus CR11 Hammer Tackers

This durable stapler is for tacking or light nailing. It uses ¼ in., ⅝ in. or ¾ in. long staples with a ⅜ in. crown.

SKU	DESCRIPTION	QUANTITY
RP-110	Rapid® Petrus CR11 Hammer Tacker	10/Case
RP-125	Spotnails® Staples, ¼ in. Long, ⅜ in. Crown	20 Boxes/Case
RP-516	Spotnails® Staples, ⅝ in. Long, ⅜ in. Crown	20 Boxes/Case
RP-138	Spotnails® Staples, ¾ in. Long, ⅜ in. Crown	20 Boxes/Case



BS-400

BS-560

### Bostitch® Heavy-Duty PowerCrown™ Tackers

These tackers features an easy squeeze design and heat treated components for heavy-duty use. They are ideally suited for use on plastic sheeting, insulation, moisture wraps, and mesh on netting. Both use BS-8377 and BS-8142 staples.

SKU	DESCRIPTION	QUANTITY
BS-400	Bostitch® T6-8 Heavy-Duty PowerCrown™ Tacker (7/16 in. Crown)	1/Case
BS-560	Bostitch® T6-80C2 Heavy-Duty PowerCrown™ Outward Clinch Tacker (7/16 in. Crown)	1/Case
BS-8377	Spotnails® Staples, 3/8 in. Long	20 Boxes/Case
BS-8142	Spotnails® Staples, 1/4 in. Long	20 Boxes/Case



DF-550



DF-516



DF-140



DF-142



DF-518

### Paslode® (Formerly Duo-Fast®) HT-550 Hammer Tackers

This hammer tacker is a fast, manually operated staple tacker with all steel construction and a comfortable hand grip. It features Jiffy Jaw, easy back-end loading and engineered balance. Also, it holds a double load of staples up to 3/8 in. Schematics are available at jrproductsinc.com.



RP-190



RP-925

### Rapid® R19 Fine Wire Hammer Tackers

This is a disposable hammer tacker that uses 1/4 in. long staples with a 3/8 in. crown.

SKU	DESCRIPTION	QUANTITY
RP-190	Rapid® R19 Fine Wire Hammer Tacker	10/Case
RP-925	1/4 in. Long Staples	50 Boxes/Case

SKU	DESCRIPTION	QUANTITY
DF-550	Paslode® HT-550 Hammer Tacker, 1/2 in. Crown	5/Case
DF-140	Duo-Fast® 1/4 in. Long Staples	20 Boxes/Case
DF-516	Duo-Fast® 5/16 in. Long Staples	20 Boxes/Case
DF-142	Generic 1/4 in. Long Staples	20 Boxes/Case
DF-518	Generic 3/8 in. Long Staples	20 Boxes/Case



DF-859



DF-516



DF-140



DF-375



DF-377

### Paslode® CS-5000 Compression Staplers

The Paslode® CS-5000 is an all purpose gun tacker that has been made even better by a handle hold down clip, an improved staple pusher and the jaw with the claw. It takes staples up to 3/8 in. long. Schematics are available at jrproductsinc.com.

SKU	DESCRIPTION	QUANTITY
DF-859	Paslode® CS-5000 Compression Stapler, 1/2 in. Crown	5/Case
DF-140	Duo-Fast® 1/4 in. Long Staples	20 Boxes/Case
DF-516	Duo-Fast® 5/16 in. Long Staples	20 Boxes/Case
DF-375	Duo-Fast® 3/8 in. Long Staples	20 Boxes/Case
DF-142	Generic 1/4 in. Long Staples	20 Boxes/Case
DF-518	Generic 5/16 in. Long Staples	20 Boxes/Case
DF-377	Generic 3/8 in. Long Staples	20 Boxes/Case

# Pneumatic Staplers

These staplers are used for applying netting and fabric. Their increased speed will save time versus using hand tacklers. They shoot up to 1,700 staples/min. and are lightweight and easy to adjust. Their double-length magazine provides a large load capacity. Schematics are available at [jrproductsinc.com](http://jrproductsinc.com).



## Josef Kihlberg 670 Pneumatic Staplers

SKU	DESCRIPTION	QUANTITY
JK-670	Josef Kihlberg® 670 Pneumatic Stapler, 3/8 in. Crown	1/Case
JK-671	1/4 in. Long Staples	20 Boxes/Case
JK-672	5/16 in. Long Staples	20 Boxes/Case
JK-676	Repair kit for Josef Kihlberg 670	—

SKU	DESCRIPTION
JK-670	Josef Kihlberg 670 Pneumatic Stapler
JK-680	Josef Kihlberg 680 Pneumatic Stapler
SN-670	Spotnails® 670 Pneumatic Stapler
FA-670	FASCO® 670 Pneumatic Stapler
FA-680	FASCO® 680 Pneumatic Stapler
BS-670	Bostitch® 670 Pneumatic Stapler
BS-680	Bostitch® 680 Pneumatic Stapler



## Josef Kihlberg 680 Pneumatic Staplers

SKU	DESCRIPTION	QUANTITY
JK-680	Josef Kihlberg 680 Pneumatic Stapler, 1/2 in. Crown	1/Case
JK-682	5/16 in. Long Staples	18 Boxes/Case
JK-683	1/2 in. Long Staples	18 Boxes/Case
JK-677	Repair kit for Josef Kihlberg 670	—

## Spotnails® 670 Pneumatic Staplers

SKU	DESCRIPTION	QUANTITY
SN-670	Spotnails® 670 Pneumatic Stapler, 3/8 in. Crown	1/Case
JK-671	1/4 in. Long Staples	20 Boxes/Case
JK-672	5/16 in. Long Staples	20 Boxes/Case

## FASCO® 670 Pneumatic Staplers

SKU	DESCRIPTION	QUANTITY
FA-670	FASCO® 670 Pneumatic Stapler, 3/8 in. Crown	1/Case
JK-671	1/4 in. Long Staples	20 Boxes/Case
JK-672	5/16 in. Long Staples	20 Boxes/Case



## FASCO® 680 Pneumatic Staplers

SKU	DESCRIPTION	QUANTITY
FA-680	FASCO® 680 Pneumatic Stapler, 1/2 in. Crown	1/Case
JK-682	5/16 in. Long Staples	18 Boxes/Case
JK-683	1/2 in. Long Staples	18 Boxes/Case

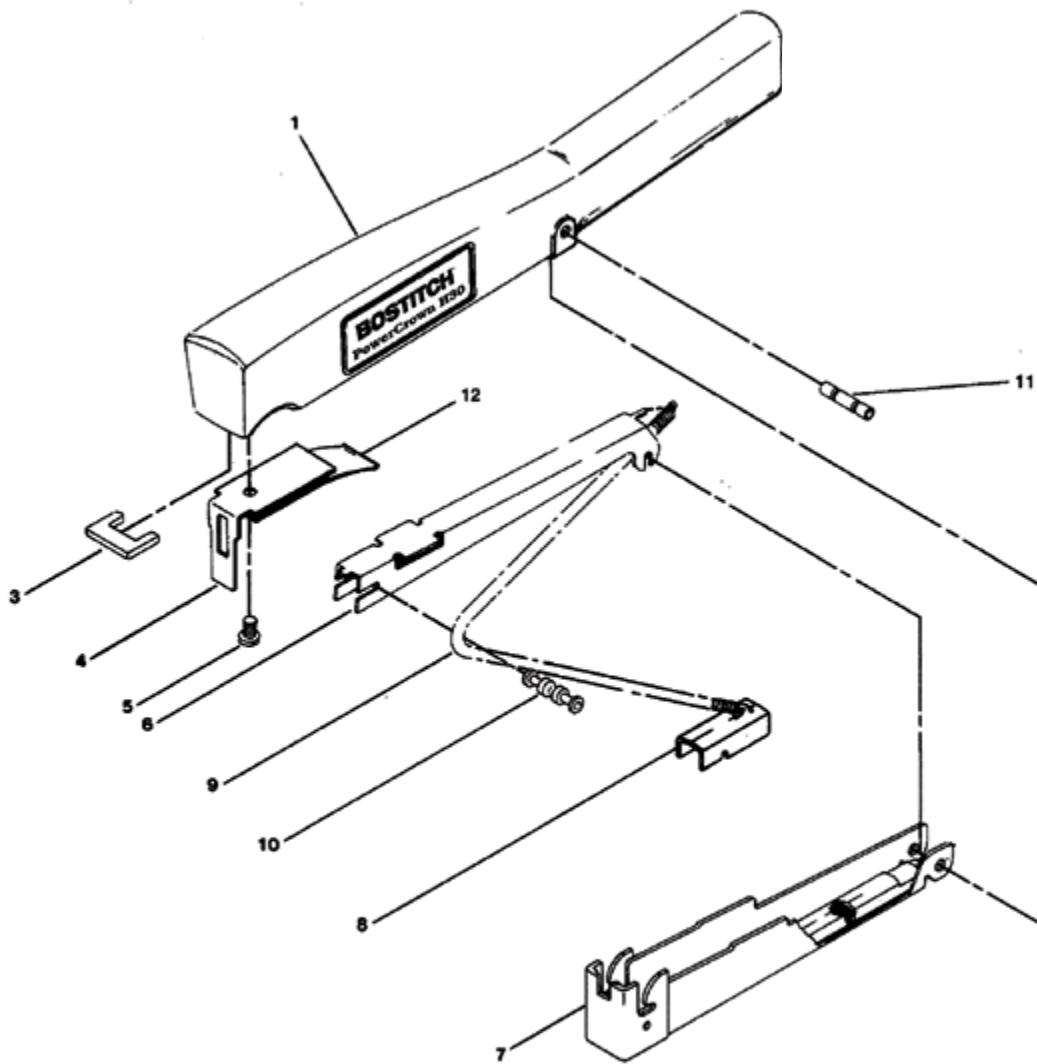
## Bostitch® 670 Pneumatic Staplers

SKU	DESCRIPTION	QUANTITY
BS-670	Bostitch® 670 Pneumatic Stapler, 3/8 in. Crown	1/Case
JK-671	1/4 in. Long Staples	20 Boxes/Case
JK-672	5/16 in. Long Staples	20 Boxes/Case

## Bostitch® 680 Pneumatic Staplers

SKU	DESCRIPTION	QUANTITY
BS-680	Bostitch® 680 Pneumatic Stapler, 1/2 in. Crown	1/Case
JK-682	5/16 in. Long Staples	18 Boxes/Case
JK-683	1/2 in. Long Staples	18 Boxes/Case

**ORDER ONLINE!** Visit us online for monthly specials • [jrproductsinc.com](http://jrproductsinc.com)



## BS-306

### BS-306 Parts

SKU	DIAGRAM #	DESCRIPTION
—	1	Frame (Not Available)
BS-603	3	Bumper
BS-624	4	Driver
BS-806	5	#10-24 x 3/8 Pan Screw
BS-605	6	Top Guide
BS-606	7	Magazine Assembly

SKU	DIAGRAM #	DESCRIPTION
BS-607	8	Pusher
BS-608	9	Pusher Spring
BS-609	10	Roller
BS-610	11	Pivot Pin
BS-615	12	Return Spring



### Chimney Balloon®

The Chimney Balloon® is specially engineered, guaranteed and patented to fix the problem of heat escaping chimneys and drafts coming down your chimneys when not in use.

SKU	SIZE
CB-0909	9 in. x 9 in.
CB-1212	12 in. x 12 in.
CB-1515	15 in. x 15 in.
CB-2409	24 in. x 9 in.
CB-3009	30 in. x 9 in.
CB-3012	30 in. x 12 in.
CB-3312	33 in. x 12 in.
CB-4515	45 in. x 15 in.
CB-0016	16 in. Handle/Valve Extender



### Insul-Hold

Insul-Hold is used to hold rigid or batt insulation. Its unique design simplifies installation, doubles as reinforcement strapping and meets Federal specifications. Insulation is impaled on the 2-½ in. arrow prongs which are on 8 in. centers. Insul-Hold is used with 16 in. and 24 in. centers.

SKU	DESCRIPTION
IH-660	100 ft. Roll



### Insulation Anchors & Accessories

Anchors are glued in place and used to support rigid board and batt type insulation for wall, ceiling and roof applications. They are copper coated 12 gauge steel spindles on a 2 in. x 2 in. galvanized steel plate. Anchors are generally installed one day and insulation the next. Both the anchors and glue need to be at room temperature when installed. Space anchors 12 in.–16 in. apart for ceilings and walls. For every 500–1000 pins, 1 gal. of adhesive is used. Other sizes are available upon request.

#### Standard Anchors

SKU	DESCRIPTION	QUANTITY
IS-010	1 in. Length	1000/Carton
IS-016	1-¾ in. Length	1000/Carton
IS-025	2-½ in. Length	1000/Carton
IS-035	3-½ in. Length	500/Carton
IS-045	4-½ in. Length	500/Carton
IS-055	5-½ in. Length	500/Carton
IS-065	6-½ in. Length	500/Carton
IS-085	8-½ in. Length	500/Carton
IS-095	9-½ in. Length	250/Carton
IS-105	10-½ in. Length	250/Carton
IS-115	11-½ in. Length	250/Carton
IS-125	12-½ in. Length	250/Carton

#### Self-Locking Washers

SKU	DESCRIPTION	QUANTITY
IS-014	Round, 1-½ in.	1000/Carton
IS-015	Square, 1-½ in. x 1-½ in.	1000/Carton

#### Round Dome Anchor Caps

SKU	DESCRIPTION	QUANTITY
IS-078	¾ in.	1000/Case

#### Anchor Adhesive

SKU	DESCRIPTION	QUANTITY
IS-101	Anchor Adhesive, 1 gal.	4/Case
IS-180	BOSS® 180 Multi-Seal® Insulation Anchor Pin System Adhesive, 1 Tube	12/Case

**500–1000 ANCHORS TO 1 GAL. OF ADHESIVE**  
**100–200 ANCHORS TO 1 TUBE OF ADHESIVE**



### Insulation Batt Supports

Wire batt supports are the fastest, most economical and most reliable method of installing roll and batt type insulation. Spring wire supports install with a twist of the wrist and hold permanently in floors, walls and ceilings. When installing, space supports 12 in.–16 in. apart. These supports are packaged with 500 per box.

SKU	SIZE	QUANTITY
BH-120	12 in. Centers	500/Box
BH-160	16 in. Centers	500/Box
BH-170	17 in. Centers	500/Box
BH-175	18 in. Centers	500/Box
BH-180	19 in. Centers	500/Box
BH-210	20 in. Centers	500/Box
BH-211	21 in. Centers	500/Box
BH-225	23 in. Centers	500/Box
BH-240	24 in. Centers	500/Box
BH-245	25 in. Centers	500/Box
BH-255	26 in. Centers	500/Box
BH-280	28 in. Centers	500/Box



### Polypropylene Twine

This polypropylene tying twine is packaged with 8,500 feet per tube and 4 tubes per case, for a total of 34,000 feet per case. Each tube come in its own carrying box. Twine can be used to secure insulation batts or for any general-purpose tying application.

SKU	LENGTH	QUANTITY
TW-100	34,000 ft.	4 Tubes



### Insulation Pillows

These are used to insulate in small spaces in between the studs. They measure 14 in. wide x 24 in. long and expand to hold approximately 1 cu. ft. of product.

SKU	DESCRIPTION	QUANTITY
IP-100	Insulation Pillow	200/Case



### Water Heater Strap Kits

These kits contain 3 straps with buckles that are used to secure water heater blanket jackets. They are packaged with 50 sets per case.

SKU	DESCRIPTION
SK-001	Water Heater Strap Kit

### Water Heater Insulation Jackets

These vinyl-faced fiberglass blankets are for gas, oil or electric water heaters up to a 60 gal. capacity. Each jacket is individually bagged and vacuum-packed for efficient storage.

SKU	DESCRIPTION	SIZE	QUANTITY
HJ-069	R-6	48 in. x 75 in.	4/Case



### Insul-Shield™

J&R Products Insul-Shield is your best protection against fire due to heat buildup from insulating over, or too close to, recessed lights or other heat producing fixtures. It is made of lightweight aluminum material and measures 14 in. high and 24 ft. long. Each roll makes about six to eight shields. Installation is quick, easy and safe to use with cellulose, fiberglass and mineral wool insulation. It is 30 gauge thick and is packaged with 11 rolls per case.

SKU	QUANTITY
IS-1424	11/Case





LC-915



LC-100



LC-200

### TENMAT Recessed Light Covers

These covers are durable, lightweight and eliminate thermal loss from lights. They can withstand temperatures up to 2,000° and can be covered by foam, fiberglass or cellulose.

SKU	DESCRIPTION	QUANTITY
LC-915	Fire-Resistant, 9 in. High x 15 in. Diameter	20/Case
LC-100	1 hr. Fire-Rated, 11 in. High x 17 in. Diameter	10/Case
LC-200	2 hr. Fire-Rated, 10 in. High x 17 in. Diameter	8/Case
LC-300	1 hr. Fire-Rated, 8 in. High x 14 in. Diameter	6/Case



IL-100 & IL-101

### Insullite® Recessed Light Covers

Insullite® recessed light covers can be used with all types of insulation, including spray foam applications. They are manufactured from post-consumer recycled paper products. These covers come non-vented or vented to prevent heat buildup, and are flame-retardant. It is recommended to keep a 2 in. air gap all the way around can light fixtures.

SKU	DESCRIPTION	QUANTITY
IL-100	Non-Vented, 10 in. x 10 in. x 12 in.	25/Bundle
IL-101	Non-Vented, 12 in. x 12 in. x 14 in.	25/Bundle



### SEI ShelterSeal™ Sill Plate Gasket

Air infiltration is a major cause of loss of heat in home and ShelterSeal™ solves the problem where the foundation wall and sill plate meet. ShelterSeal™ is moisture resistant and it will not deteriorate after years of use. It also helps to seal out insects. ShelterSeal™ is also ideal for use around door and window frames.

SKU	DESCRIPTION	QUANTITY
89600	1/4 in. x 3-1/2 in. x 50 ft.	8/Bag, 20 Bags/Box
89601	1/4 in. x 5-1/2 in. x 50 ft.	5/Bag, 20 Bags/Box
89602	1/4 in. x 7-1/2 in. x 50 ft.	4/Bag, 20 Bags/Box



### Aluminum Insulation Barrier

Aluminum insulation barrier can be used around recessed lights and other heat producing fixtures or for any application where flashing is used. These barriers are made from the same lightweight aluminum material as our Insul-Shield™ product, only without the perforations. Each roll measures 20 in. high and 50 ft. long, and can be cut to size. Installation is quick, easy and safe with cellulose, fiberglass and mineral wool insulation. Aluminum insulation barrier is 30 gauge thick.

SKU	DESCRIPTION
IB-2050	20 in. x 50 ft.



### Wraptor® Housewrap

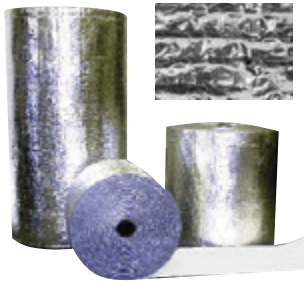
Wraptor® is a breathable cross-woven polyethylene housewrap that helps prevent wall sheathing from soaking up moisture that gets behind the exterior cladding (vinyl, siding, brick, etc.). Housewrap will require LTL freight delivery.

SKU	DESCRIPTION
HW-910	9 ft. x 100 ft.
HW-9150	9 ft. x 150 ft.

## 4 WAYS TO ORDER!

Visit us online for monthly specials

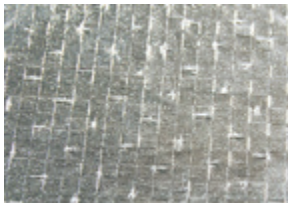
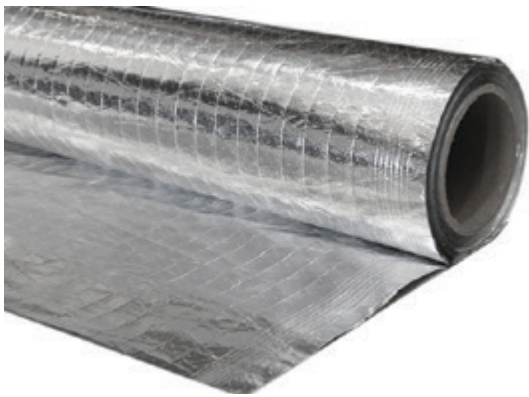
	Phone	800-343-4446 260-353-3600	8 AM-5 PM EST
	Fax	800-518-4446 260-353-3826	24 HR
	Web	jrproductsinc.com	24 HR
	Pick Up	Stop by your local J&R Products or Cameron Ashley location (Call ahead to check availability)	



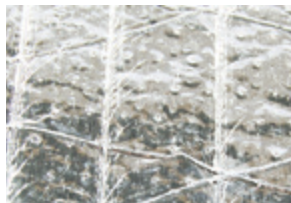
### Reflective Insulation

Reflective insulation consists of two layers of aluminum foil laminated to two layers of polyethylene air bubble cushioning. The air bubbles form trapped air spaces to provide excellent R-values. The solid film and foil surfaces stop convection heat loss and infiltration while the aluminum surfaces stop radiant heat by reflecting it. Reflective insulation will require LTL freight delivery.

SKU	DESCRIPTION
DBF-2125	Double Bubble Foil, 2 ft. x 125 ft.
DBF-4125	Double Bubble Foil, 4 ft. x 125 ft.



13709



13708

### Radiant Barriers

Super R® Diamond is a two sided reflective aluminized polyester film with reinforced scrim inside. It is designed to reflect radiant heat in all seasons. Super R® Plus is foil for new or retrofit housewrap, roofing systems, radiant heat flooring or OEM's when a stronger grade is needed. Both products come in 4 ft. x 125 ft. rolls.

SKU	DESCRIPTION
13708	Super R® Diamond
13709	Super R® Diamond Plus



VP-010



VP-100

### Viper® CS Polyethylene Crawl Space Vapor Barriers

Viper® CS vapor barriers are designed specifically for controlling moisture migration in crawl space applications. They are manufactured with a bright white color to give any crawl space a fresh, clean look. Viper® CS vapor barriers feature a low perm rating and are engineered with exceptional puncture resistance, tear resistance and tensile strength, providing a long-term solution for controlling crawl space moisture.

SKU	DESCRIPTION
VP-065	Viper® CS, 6.5 mil, 12 ft. x 100 ft.
VP-010	Viper® CS, 10 mil, 12 ft. x 100 ft.
VP-016	Viper® CS, 16 mil, 12 ft. x 100 ft.
VP-100	Viper® Vapor Tape White Poly Seam Tape, 4 in. x 180 ft.



MS-3648  
Effective R-value of 11.74

### MagnaVent

This energy saving insulation cover seals and insulates a whole house fan grill. Using an advanced magnetic seal, it is easily removable from the fan grill for seasonal usage, and snaps back into place to cover the grill for winter.

SKU	SIZE
MS-3648	36 in. x 48 in.

## HUSKY® Construction (Poly) Film

This clear polyethylene sheeting is a vapor barrier for walls and floors that prevents condensation and energy loss. Multiple sizes are available in both construction grade and full-mil.



SKU	DESCRIPTION	SIZE
PL-031	0.3 mil	12 ft. x 400 ft.
PL-079	0.7 mil	9 ft. x 400 ft.
PL-105	1.5 mil	8 ft. 4 in. x 200 ft.
PL-112	1.5 mil	12 ft. x 200 ft.
PL-200	2 mil	8 ft. 4 in. x 200 ft.
PL-210	2 mil	10 ft. x 100 ft.
PL-212	2 mil	12 ft. x 200 ft.
PL-400	4 mil	8 ft. x 100 ft.
PL-484	4 mil	8 ft. 4 in. x 100 ft.
PL-409	4 mil	9 ft. x 100 ft.
PL-494	4 mil	9 ft. 4 in. x 100 ft.
PL-410	4 mil	10 ft. x 100 ft.
PL-4104	4 mil	10 ft. 4 in. x 100 ft.
PL-4124	4 mil	12 ft. 4 in. x 100 ft.
PL-430	4 mil	14 ft. x 300 ft.
PL-416	4 mil	16 ft. x 100 ft.
PL-608	6 mil	8 ft. x 100 ft.
PL-600	6 mil	8 ft. 4 in. x 100 ft.
PL-609	6 mil	9 ft. x 100 ft.
PL-601	6 mil	10 ft. x 100 ft.
PL-612	6 mil	12 ft. x 100 ft.
PL-616	6 mil	16 ft. x 100 ft.
PL-620	6 mil	20 ft. x 100 ft.
PL-610	6 mil (Black)	10 ft. x 100 ft.
PL-613	6 mil (Black)	12 ft. x 100 ft.
47580	6 mil (Black)	20 ft. x 100 ft.
PL-820	8 mil	20 ft. x 100 ft.
PL-120	10 mil	20 ft. x 100 ft.
PL-122	10 mil (White)	20 ft. x 100 ft.



## Insul-Doors™

This product is a perfect replacement for old plywood attic doors. It is shipped 24 in. x 32 in. by 7 in. thick, and can be cut to size.

SKU	SIZE	R-VALUE
ID-R30	24 in. x 32 in. x 7 in.	R-30
ID-R50	24 in. x 32 in. x 9 in.	R-50



PD-101  
Effective R-value of 13

## Attic Stair, Attic Door, & Knee Wall Covers

These attic stair and attic door covers are easy to install over stairway and door openings. This gives a high R-value along with a good seal around the opening. They use zippers to gain access easily from below.

SKU	DESCRIPTION
PD-100	Energy Shield I™, 2 Stair Fold, 22-½ in. x 54 in. x 11 in.
PD-101	Energy Shield I™, 2 Stair Fold, 25 in. x 54 in. x 11 in.
PD-104	Energy Shield™, 3 Stair Fold, 22.5 in. x 54 in. x 16 in.
PD-105	Energy Shield™, 3 Stair Fold, 25 in. x 54 in. x 16 in.



SKU	DESCRIPTION
800010	Santa Fe Oasis105 Dehumidifier

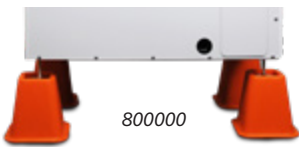
Santa Fe's most versatile and energy-efficient dehumidifier, the Oasis105, is perfect for a wide range of applications, including whole-home, basements, attics, and crawl spaces. It features onboard digital controls, variable speed fan, dew point cut out, and a low maintenance positive pressure condensate drain.



800011



800003



800000



800015

800014



800002



800012



800013

### Santa Fe Accessories

SKU	DESCRIPTION
800011	Santa Fe Large Hanging Kit
800003	Santa Fe Small Hanging Kit
800000	Santa Fe Dehumidifier Riser
800015	Santa Fe 10 in. Flex Duct
800014	Santa Fe 8 in. Flex Duct
800002	Santa Fe Condensate Pump Kit
800012	Santa Fe Compact70 Supply Duct Kit
800013	Santa Fe Oasis105 Supply Duct Kit



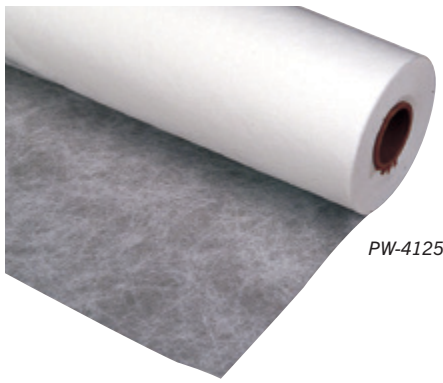
SKU	DESCRIPTION
800004	Santa Fe Compact70 Dehumidifier

With a horizontal configuration and a flow-through design, this system removes excess moisture from low-clearance crawl spaces and tight basement areas to a small home theater.



### Santa Fe MERV Filters

SKU	DESCRIPTION
800006	Santa Fe MERV 13 Filter, 9 in. x 11 in. x 1 in.
800007	Santa Fe MERV 13 Filter, 9 in. x 11 in. x 1 in. (12 pack)
800008	Santa Fe MERV 13 Filter, 14 in. x 17 in. x 1.75 in.
800016	Santa Fe Merve13 Oasis 14 in. x 12 in. x 1 Filter (12 pack)
800009	Santa Fe MERV 13 Filter, 14 in. x 17 in. x 1.75 in. (12 pack)



PW-4125

### Polyweb Insulation Fabric (Breathable)

Polyweb is ideal for spraying against or behind and for many other applications.

SKU	SIZE	QUANTITY
PW-1800	18 in. x 375 ft.	1 Roll/Case
PW-4125	4 ft. x 375 ft.	1 Roll/Case
PW-4250	4 ft. x 750 ft.	1 Roll/Case
PW-8125F	8 ft. x 375 ft.	1 Roll/Case
PW-8250F	8 ft. x 750 ft.	1 Roll/Case
PW-9125F	9 ft. x 375 ft.	1 Roll/Case
PW-9250F	9 ft. x 750 ft.	1 Roll/Case
PW-1125F	10 ft. x 375 ft.	1 Roll/Case
PW-1250F	10 ft. x 750 ft.	1 Roll/Case

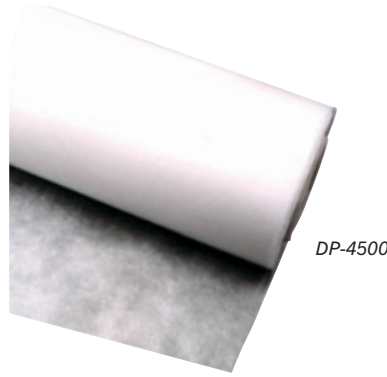


IW-4125

### Hanes Engineered Materials Insulweb® (Breathable)

Insulweb® fabric is 100% polypropylene and is ideal for spraying against and for many other applications.

SKU	SIZE	QUANTITY
IW-4125	4 ft. x 375 ft.	1 Roll/Case
IW-4250	4 ft. x 750 ft.	1 Roll/Case
IW-8125F	8 ft. x 375 ft.	1 Roll/Case
IW-8250F	8 ft. x 750 ft.	1 Roll/Case
IW-9125F	9 ft. x 375 ft.	1 Roll/Case
IW-9250F	9 ft. x 750 ft.	1 Roll/Case
IW-1125F	10 ft. x 375 ft.	1 Roll/Case



DP-4500

### Hanes Engineered Materials Insuloc™ Fabric (Breathable)

This fabric is white, nonwoven 100% polypropylene. It is ideal for spraying against or behind and for many other applications. It comes in 8 ft., 9 ft. and 10 ft. sizes that are folded for easy shipping.

SKU	DESCRIPTION	SIZE
DP-4500	Hanes Engineered Materials Insuloc™ Fabric	4 ft. x 1,500 ft.
DP-4750	Hanes Engineered Materials Insuloc™ Fabric	4 ft. x 750 ft.
DP-8750	Hanes Engineered Materials Insuloc™ Fabric, Folded	8 ft. x 750 ft.
DP-9750	Hanes Engineered Materials Insuloc™ Fabric, Folded	9 ft. x 750 ft.
DP-1375	Hanes Engineered Materials Insuloc™ Fabric, Folded	10 ft. x 375 ft.



PW-014

### Pocket Rollers

These rollers are used to help pack insulation behind fabric after it's been blown in. Rollers fit between studs to pack insulation slightly below studs.

SKU	DESCRIPTION	SIZE
PW-014	Pocket Roller	14 in.
WR-012	Replacement Roller	14 in.



WR-012



### Wall Rollers

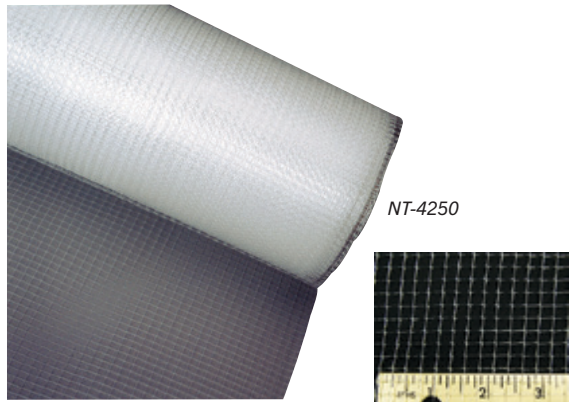
Wall rollers are used to help pack insulation behind fabric after it's been blown in to keep it even with the studs. These rollers are for stud cavities up to 26 in. wide.

SKU	DESCRIPTION	SIZE
WR-045	Wall Roller	27 in.
WR-027	Replacement Roller	27 in.



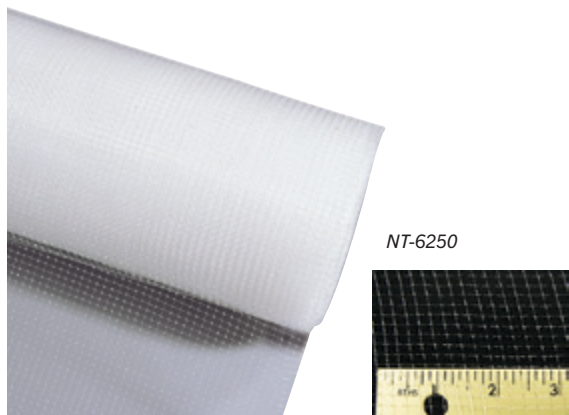
# Insulation Netting

Netting offers several advantages over insulation supports and does not rust or retain moisture. Once installed, it provides easy access to a structure for expansion or repair.  $\frac{1}{8}$  in. and  $\frac{3}{16}$  in. netting both work well for walls. Netting can also be used as a backing to hold wet spray, for spraying fiberglass insulation or as temporary face before installing drywall. Use  $\frac{1}{4}$  in. netting where greater strength is required and for fireproofing spray applications. The 1 in. x 2 in. and the  $\frac{3}{4}$  in. sizes are great replacements for wire batt hangers.



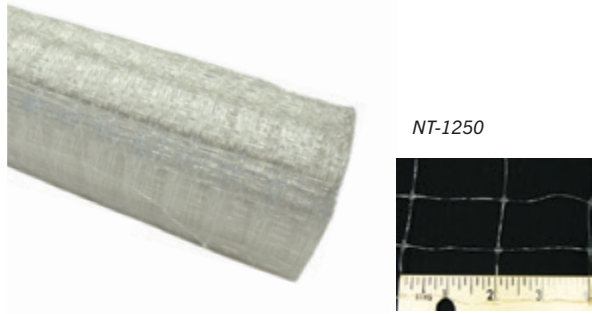
## Medium-Duty Netting

SKU	SIZE	QUANTITY
NT-4250	$\frac{1}{4}$ in. Mesh, 4 ft. x 250 ft.	9 Rolls/Case
NT-4450	$\frac{1}{4}$ in. Mesh, 4 ft. x 500 ft.	4 Rolls/Case
NT-4125	$\frac{1}{4}$ in. Mesh, 8 ft. x 125 ft., Folded	9 Rolls/Case
NT-4825	$\frac{1}{4}$ in. Mesh, 8 ft. x 250 ft., Folded	4 Rolls/Case
NT-111	$\frac{1}{4}$ in. Mesh, 111 in. x 250 ft., Folded	4 Rolls/Case
NT-120	$\frac{1}{4}$ in. Mesh, 120 in. x 250 ft., Folded	4 Rolls/Case



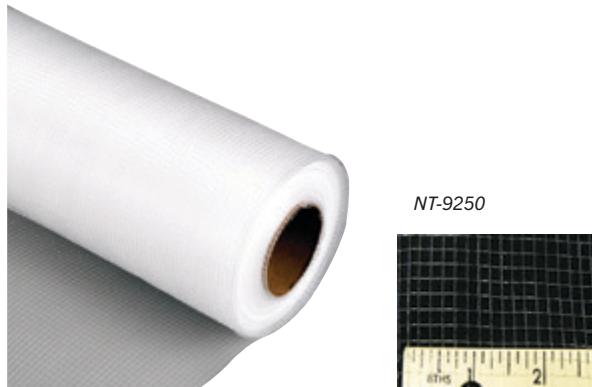
## Light-Duty Netting

SKU	SIZE	QUANTITY
NT-6250	$\frac{1}{8}$ in. Mesh, 4 ft. x 250 ft.	12 Rolls/Case
NT-6125	$\frac{1}{8}$ in. Mesh, 8 ft. x 125 ft., Folded	12 Rolls/Case
NT-6825	$\frac{1}{8}$ in. Mesh, 8 ft. x 250 ft., Folded	6 Rolls/Case



## Economy Netting

SKU	SIZE	QUANTITY
NT-1250	1 in. x 2 in. Mesh, 4 ft. x 250 ft.	16 Rolls/Case
NT-1125	1 in. x 2 in. Mesh, 8 ft. x 125 ft., Folded	16 Rolls/Case



## 3/16 in. Netting

SKU	SIZE	QUANTITY
NT-9250	$\frac{3}{16}$ in. Mesh, 4 ft. x 250 ft.	12 Rolls/Case
NT-9825	$\frac{3}{16}$ in. Mesh, 8 ft. x 250 ft., Folded	9 Rolls/Case



Redwood



Rough Sawn Cedar



Pine

## Wood Plugs

Unlike other plugs that are completely tapered, our plug is tapered 5°. Cut from western white pine, our ¾ in. thick plugs have slightly oversized tops, making for a tight fit. All wood plugs are made from kiln dried lumber and are produced on specially designed equipment, resulting in quality, uniformly-sized plugs. Our plugs feature a unique advantage; they are manufactured by cutting from both sides at once, thus eliminating all splintered face edges that require time-consuming patching methods. These plugs are counted prior to being packaged into net bags, eliminating extra handling in further distribution and inventory control. They are also available in redwood and rough sawn cedar.

## Pine Wood Plugs

SKU	SIZE*	QUANTITY	SKU	SIZE*	QUANTITY
WP-100	1 in.	250/Pack	WP-206	2-½ in.	250/Pack
WP-106	1-⅛ in.	250/Pack	WP-213	2-⅝ in.	250/Pack
WP-113	1-⅜ in.	225/Pack	WP-219	2-¾ in.	225/Pack
WP-119	1-⅞ in.	250/Pack	WP-225	2-¾ in.	225/Pack
WP-125	1-¾ in.	175/Pack	WP-250	2-½ in.	175/Pack
WP-150	1-½ in.	125/Pack	WP-256	2-⅞ in.	175/Pack
WP-200	2 in.	250/Pack	WP-300	3 in.	125/Pack
WP-201	2 in. Standard	250/Pack			

## Redwood & Rough Sawn Cedar Plugs

REDWOOD SKU	CEDAR SKU	SIZE*	QTY./PACK	REDWOOD SKU	CEDAR SKU	SIZE*	QTY./PACK
RW-100	RSC-100	1 in.	250	RW-213	RSC-213	2-½ in.	250
RW-113	RSC-113	1-⅛ in.	225	RW-225	RSC-225	2-¾ in.	225
RW-125	RSC-125	1-¾ in.	175	RW-250	RSC-250	2-½ in.	175
RW-150	RSC-150	1-½ in.	125	RW-256	RSC-256	2-⅞ in.	175
RW-200	RSC-200	2 in.	250	RW-300	RSC-300	3 in.	125
RW-206	RSC-206	2-⅞ in.	250				

\*Our plugs are cut to fit with the bits/hole saws that J&R carries.

## Long Nose Plastic Plugs



The Long Nose, with its exceptional design, is our best plastic plug. Made of high-impact polystyrene with a ⅝ in. shank and heavy gripping teeth, this plug will hold in both single and multiple layers of siding. Extra wide cap has a tapered edge for obscured vision on siding and a textured top for easy painting.

SKU	SIZE	QUANTITY
LS-100	1 in.	4500/Box; 500/Bag
LS-125	1-¼ in.	2500/Box; 250/Bag
LS-150	1-½ in.	2000/Box; 250/Bag
LS-200	2 in.	900/Box; 250/Bag



Regular Plastic Plugs



Regular Plastic Plugs

## Regular Plastic Plugs

Regular plastic plugs are made of high-impact polystyrene with a ⅝ in. shank and two clips on each side for a firm grip in aluminum, vinyl and steel siding. They also have a paintable matte finish.

SKU	SIZE	QUANTITY
SP-100	1 in.	500/Bag
SP-100BL	1 in. (Black)	500/Bag
SP-125	1-¼ in.	250/Bag
SP-150	1-½ in.	250/Bag
SP-200	2 in.	250/Bag
SP-213	2-⅞ in. (Black)	250/Bag
SP-250	2-½ in.	250/Bag
SP-300	3 in. (Black)	Bulk (300/Case)
SP-400	4 in. (Black)	Bulk (300/Case)



## Foam Plugs

Foam plugs are used for holes in drywall and are recessed to accept spackling compound. They absorb little moisture, and thus require fewer layers of spackling for a smooth finish. Their density is 0.90, and they are ¾ in. thick.

SKU	SIZE	QUANTITY
FP-100	1 in.	1000/Pack
FP-125	1-¼ in.	1000/Pack
FP-150	1-½ in.	1000/Pack
FP-200	2 in.	1400/Pack
FP-213	2-⅞ in.	1000/Pack
FP-225	2-¾ in.	1000/Pack
FP-250	2-½ in.	750/Pack
FP-256	2-⅞ in.	750/Pack
FP-300	3 in.	500/Pack



WS-125

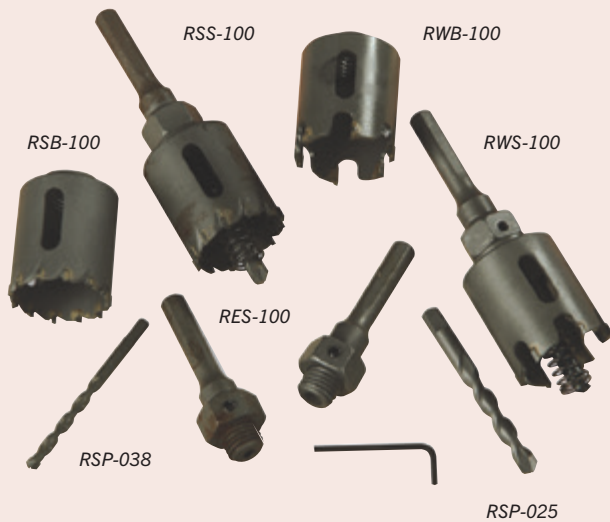


WS-625

## Sash Lock Shims

These white, opaque plastic shims adjust for non-aligned sash locks. Both are 2-¾ in. long, ¾ in. wide and sold per package.

SKU	THICKNESS	QUANTITY
WS-125	⅝ in.	100/Pack
WS-625	⅞ in.	100/Pack



### Relton Carbide-Tipped Hole Saws & Accessories

Carbide tips are brazed to the hole saw body with special high-temperature silver solder. Elongated slots are provided to allow easy plug removal. Stucco saws cut stucco, mesh, asbestos or aluminum siding. Wood saw works best on any type of wood, including particle board. Pilots are carbide. Complete saws include cutter head, shank and pilot.

SKU	DESCRIPTION	SIZE	CUTTER HEAD
RSS-100	Relton Stucco Saw, Complete	1 in.	RSB-100
RSS-125	Relton Stucco Saw, Complete	1-¼ in.	RSB-125
RSS-150	Relton Stucco Saw, Complete	1-½ in.	RSB-150
RSS-200	Relton Stucco Saw, Complete	2 in.	RSB-200
RSS-213	Relton Stucco Saw, Complete	2-⅝ in.	RSB-213
RSS-250	Relton Stucco Saw, Complete	2-½ in.	RSB-250
RSS-300	Relton Stucco Saw, Complete	3 in.	RSB-300

SKU	DESCRIPTION	SIZE	CUTTER HEAD
RWS-100	Relton Wood Saw, Complete	1 in.	RWB-100
RWS-150	Relton Wood Saw, Complete	1-½ in.	RWB-150
RWS-200	Relton Wood Saw, Complete	2 in.	RWB-200
RWS-213	Relton Wood Saw, Complete	2-⅝ in.	RWB-213
RWS-250	Relton Wood Saw, Complete	2-½ in.	RWB-250
RWS-300	Relton Wood Saw, Complete	3 in.	RWB-300

### Accessories

SKU	DESCRIPTION	SIZE
RSP-025	Pilot, for Less Than 2 in.	¼ in.
RSP-038	Pilot, for 2 in. & Above	⅜ in.
RSP-039	Pilot, High-Speed	⅜ in.
RES-100	Shank, for Less Than 2 in.	¼ in.
RES-200	Shank, for 2 in. & Above	⅜ in.
RES-042	Relton Small Ejector Spring, for Less Than 2 in.	—
RES-062	Relton Large Ejector Spring, for 2 in. & Above	—



### LENOX® Bi-Metal Hole Saws

These hole saws feature bi-metal construction with a high-speed steel cutting edge. The VARI-TOOTH® design creates sharper tooth tips for faster cutting. These saws have a cutting depth of 1-½ in. (38 mm). The positive rake tooth creates a more aggressive cutting action than conventional tooth styles.

SKU	DESCRIPTION	SIZE
LXH-100	LENOX® Bi-Metal Hole Saw	1 in.
LXH-113	LENOX® Bi-Metal Hole Saw	1-⅛ in.
LXH-125	LENOX® Bi-Metal Hole Saw	1-¼ in.
LXH-150	LENOX® Bi-Metal Hole Saw	1-½ in.
LXH-200	LENOX® Bi-Metal Hole Saw	2 in.
LXH-213	LENOX® Bi-Metal Hole Saw	2-⅝ in.
LXH-256	LENOX® Bi-Metal Hole Saw	2-⅞ in.
LXH-300	LENOX® Bi-Metal Hole Saw	3 in.



### Asbestos Cutters

These rugged bits are the best for asbestos siding. They are built to cost less and be sharpened repeatedly. Each bit comes with a carbide pilot.

SKU	DESCRIPTION
AB-100	1 in. Asbestos Bit



LL-300

**ORDER ONLINE!**  
Visit us online for monthly specials  
[jrproductsinc.com](http://jrproductsinc.com)

### Lenox® Leader Bits

These automatic feed wood bits feature outside diameter threads, replaceable lead screws and are easy to sharpen. They have a rust-resistant black oxide finish.

SKU	DESCRIPTION	QUANTITY
LL-100	1 in.	1/Pack
LL-125	1-¼ in.	1/Pack
LL-150	1-½ in.	1/Pack
LL-200	2 in.	1/Pack
LL-256	2-⅞ in.	1/Pack
LL-300	3 in.	1/Pack

### Lead Screws & Set Screws

SKU	DESCRIPTION	QUANTITY
LLS-100	Lead Screws	5/Pack
LLS-102	Set Screws	5/Pack



# PLUS<sup>®</sup> POINTS

## Your Loyalty Rewarded

PLUS Points is our exclusive program that rewards your loyalty. For every dollar that you spend with J&R Products, earn 2 PLUS Points for your business that can be turned into rewards of your choice. And, the best part, the program is completely free to join!

### The steps are simple:

1. Activate your PLUS Account at [capluspoints.com](http://capluspoints.com)
2. Purchase from J&R Products
3. Earn 2 Points for every dollar spent
4. Redeem Points for FREE rewards

Shop our online reward catalog or choose custom redemptions that make the reward choices endless:

- Online Travel
- Electronics
- Sporting Goods
- Custom Requests



## Everyday Business = Endless Rewards

Activate and access your account: [capluspoints.com](http://capluspoints.com)

Customer service: 800-213-9066 or [CAPlus@rewardtrax.com](mailto:CAPlus@rewardtrax.com)



LXC-125



LXA-110

### LENOX<sup>®</sup> Carbide-Tipped Hole Saws

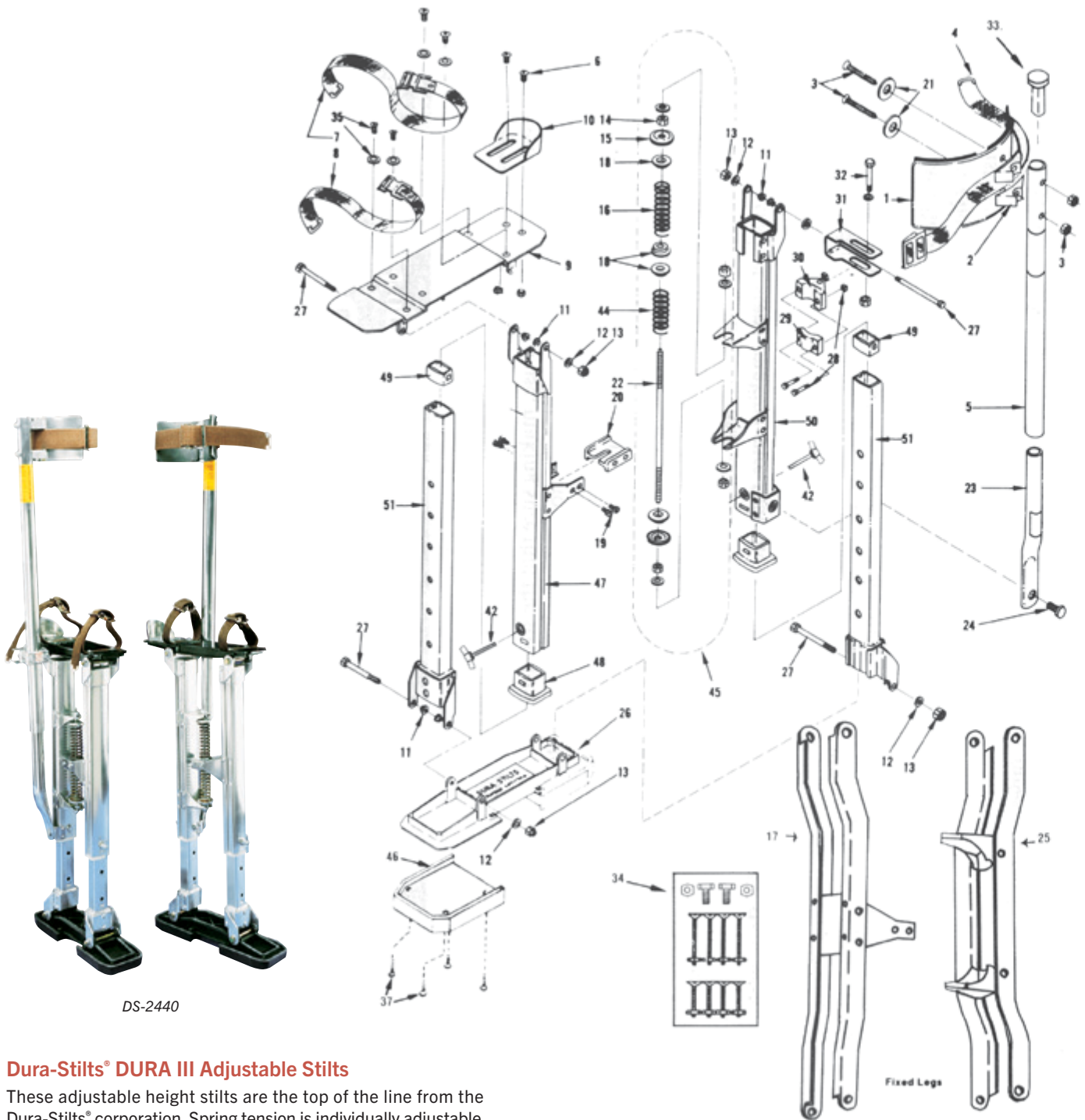
These carbide-tipped hole saws have greater wear-resistance and higher heat-resistance than bi-metal hole saws. The carbide-tipped tooth design features triple-chip grind for smoother, concentric cuts. These saws have up to 10 times longer life on abrasive material than standard bi-metal hole saws. They have a cutting depth of 1-½ in. (38mm). The use of a carbide-tipped pilot is recommended.

SKU	SIZE
LXC-100	1 in.
LXC-125	1-¼ in.
LXC-200	2 in.
LXC-250	2-½ in.
LXC-300	3 in.

### Lenox<sup>®</sup> Hole Saws Accessories

SKU	DESCRIPTION	SIZE
LXA-110	Arbor & Pilot	1-¼ in.–3 in.
LXP-100	Pilot	¼ in.

# Dura-Stilts Diagram



DS-2440

## Dura-Stilts® DURA III Adjustable Stilts

These adjustable height stilts are the top of the line from the Dura-Stilts® corporation. Spring tension is individually adjustable for natural leg movement and gives exactly the right “feel”. Telescoping legs slide smoothly for quick and easy adjustments without tools. Strap-on shoe adapters are included.

SKU	SIZE
DS-1422	14 in.–22 in.
DS-1830	18 in.–30 in.
DS-2440	24 in.–40 in.
DS-2450	Adapters

# Dura-Stilts Parts List

DIAGRAM #	DESCRIPTION	SKU
1	Leg Band with Pads	DS-2461
2	Leg Band with Spacer	DS-2462
3	¼-20 x 2 in. Flat Head Phillips Machine Screw with Locknut	DS-2466
4	Leg Strap & Buckle	DS-2465
5a	1-½ in. OD Upper Strut Tube, All Sizes Except F-24 & D24-40, Approximate Length of 23-¾ in.	DS-2478
5b	1-½ in. OD Upper Strut Tube, F-24 & D24-40 Only, Approximate Length of 26-½ in.	DS-2476
6	#10-24 x ½ in. Truss Head Machine Screw with Nut	DS-2469
7	Arch Strap (Long) with Self-Locking Buckle, Approximate Length of 20 in.	DS-2463
8	Toe Strap (Short) with Self-Locking Buckle, Approximate Length of 17-½ in.	DS-2464
9	Foot Plate	DS-2470
10	Adjustable Heel Bracket	DS-2471
11	Nylon Leg Bearing	DS-2479
12	¼ in. Washer	DS-2480
13	¼-20 Locknut	DS-2481
14	¼-20 Hex Nut	DS-2482
15	Spring Adjuster	DS-2483
16	Upper Coil Spring with Bearings	DS-2474
17a-14	Forward Leg Assembly, F-14, Approximate Length of 13 in.	DS-2484
17a-16	Forward Leg Assembly, F-16, Approximate Length of 15 in.	DS-2485
17a-18	Forward Leg Assembly, F-18, Approximate Length of 17 in.	DS-2486
17a-20	Forward Leg Assembly, F-20, Approximate Length of 19 in.	DS-2487
17a-22	Forward Leg Assembly, F-22, Approximate Length of 21 in.	DS-2488
17a-24	Forward Leg Assembly, F-24, Approximate Length of 23 in.	DS-2489
18	Nylon Spring Bearing	DS-2490
19	Self-Threading Screw, Aluminum Spring Dividers	DS-2491
20	Spring Divider with 4 Screws	DS-2492
21	Large Leg Band Support Washer	DS-2467
22	¼-20 x 7-¾ in. Stud, Threaded on Both Ends	DS-2493
23a	1 in. OD Lower Strut Tube, Sizes F-14, F-16, F-18, & D14-22, Approximate Length of 20-¾ in.	DS-2494
23b	1 in. OD Lower Strut Tube, Sizes F-20, F-22, & D18-30, Approximate Length of 22-¾ in.	DS-2495
23c	1 in. OD Lower Strut Tube, Sizes F-24 & D24-40, Approximate Length of 28-¾ in.	DS-2477
24	¼-20 x 7/16 in. Hex Bolt, Washer, & Locknut	DS-2496
25a-14	Rear Leg Assembly, F-14, Approximate Length of 13 in.	DS-2497
25a-16	Rear Leg Assembly, F-16, Approximate Length of 15 in.	DS-2498
25a-18	Rear Leg Assembly, F-18, Approximate Length of 17 in.	DS-2499
25a-20	Rear Leg Assembly, F-20, Approximate Length of 19 in.	DS-2500
25a-22	Rear Leg Assembly, F-22, Approximate Length of 21 in.	DS-2501
25a-24	Rear Leg Assembly, F-24, Approximate Length of 23 in.	DS-2502

DIAGRAM #	DESCRIPTION	SKU
26a	Floor Plate Only	DS-2472
26b	Floor Plate with Soles Mounted	DS-2503
27	¼-20 x 3-½ in. Cap Screw	DS-2504
28	¼-20 x 1-½ in. Cap Screw with Square Nut	DS-2505
29	Tube Clamp, A, Small	DS-2506
30	Tube Clamp, B, Large	DS-2507
31	Slotted Clamp Bracket	DS-2508
32	¼-20 x 1-½ in. Cap Screw with Locknut	DS-2509
33	Strut Tube Cap/Plug	DS-2510
34	Shoe Mounting Screw Package: 4 #10-24 x 1-¼ in. Machine Screws, 4 #10-24 x 1 Machine Screws, & 8 #10-24 Hex Nuts	DS-2511
35	Strap Mounting Screw with Washer	DS-2512
36	#8 Strap Washer	DS-2513
37	#8 x ½ in. Sole Mounting Screw	DS-2514
42	Wing Bolt	DS-2468
44	Lower Coil Spring with Bearings	DS-2475
45	Entire Spring Assembly	DS-2515
46	Replaceable Sole with 4 Screws	DS-2473
47a	Forward Adjustable Leg, Dura III 1/4 in. – 22 in., Approximate Length of 11 in.	DS-2516
47b	Forward Adjustable Leg, Dura III 18 in. – 30 in., Approximate Length of 14-¾ in.	DS-2517
47c	Forward Adjustable Leg, Dura III 24 in. – 40 in., Approximate Length of 20-¾ in.	DS-2518
48	Large Nylon Extension Tube Sleeve, Lower	DS-2519
49	Small Nylon Extension Tube Sleeve, Upper	DS-2520
50a-1	Left Rear Adjustable Leg, Dura III 14 in. – 22 in., Approximate Length of 11 in.	DS-2521
50b-1	Left Rear Adjustable Leg, Dura III 18 in. – 30 in., Approximate Length of 14-¾ in.	DS-2522
50c-1	Left Rear Adjustable Leg, Dura III 24 in. – 40 in., Approximate Length of 20-¾ in.	DS-2523
50a-2	Right Rear Adjustable Leg, Dura III 14 in. – 22 in., Approximate Length of 11 in.	DS-2524
50b-2	Right Rear Adjustable Leg, Dura III 18 in. – 30 in., Approximate Length of 14-¾ in.	DS-2525
50c-2	Right Rear Adjustable Leg, Dura III 24 in. – 40 in., Approximate Length of 20-¾ in.	DS-2526
51a	Extension Tube, Dura III 14 in. – 22 in., 5 Holes	DS-2527
51b	Extension Tube, Dura III 18 in. – 30 in., 7 Holes	DS-2528
51c	Extension Tube, Dura III 24 in. – 40 in., 9 Holes	DS-2529
53	Parts/Instruction Book	DS-2530
54	Strap Adapter Screw Package: 8 #8 x ½ in. Screws, 8 #8 Washers, 4 #10-24 x ½ in. Screws, & 4 #10-24 Hex Nuts	DS-2531
55	Sole Mounting Screw Package, 16 #8 x ½ in. Screws	DS-2532

## WARNING!

USE GENUINE DURA-STILTS REPLACEMENT PARTS ONLY—MAKE NO MODIFICATIONS OR SUBSTITUTIONS NEVER USE DURA-STILT PARTS ON IMITATION BRANDS OR THEIR PARTS ON DURA-STILTS



### Retractable & Fixed Blade Utility Knives

These utility knives are all metal construction, rugged and heavy-duty.

SKU	DESCRIPTION
UK-102	Heavy-Duty Fixed Blade Knife
UK-110	Retractable Blade Knife

### VinTool™ SuperKut Insulation Knife™

This heavy-duty fiberglass batt knife can cut batts, foam board and drywall. The knife comes complete with a sheath and two extra 4 in. scraper blades. The extra blades are stored in the knife's one-piece handle.

SKU	DESCRIPTION
VT-100	VinTool™ SuperKut Insulation Knife™
VT-200	10 Replacement Blades

### Replacement Blades & Blade Dispensers

These heavy-duty utility blades are made of 0.025 in. thick high-carbon surgical grade steel and double-honed to provide an ultra-keen edge. They fit many utility knives and are for cutting drywall, fiberglass, wood, plastic, cardboard and more. The utility blade safety dispenser is plastic and dispenses any heavy-duty utility blade.

SKU	DESCRIPTION	QUANTITY
UB-105	Blades	100 Blades/Each
UB-110	Dispenser/Blades	100 Blades/Each



### Utility Knife Sheaths

This open end knife sheath is 3 in. x 7-5/8 in. with 2-1/2 in. belt slots. It is made of top grain cowhide with rivets and sewn construction.

SKU	DESCRIPTION
UH-101	Utility Knife Sheath



### Batt Knives & Sheaths

These square batt knives are made of 16 gauge steel and are excellent for cutting thick batts and mineral wool. Sheaths fit both the 6 in. and 8 in. knives (UK-600 and UK-800). The Lansky® blade sharpener is great for these or any other knives.

SKU	SIZE	QUANTITY
UK-600	Batt Knife, 6 in.	10/Box
UK-800	Batt Knife, 8 in.	10/Box
BDK-800	Black Dragon Knife, 8 in.	10/Box
UH-800	Sheath for 8 in. Knife	1
KS-100	Lansky Knife Sharpener	6/Box



### Malco® SideSwiper® II Vinyl Siding Removal Tools

This tool is made of durable spring steel construction and is made for removing siding.

SKU	DESCRIPTION
ST-380	Malco® SideSwiper® II Vinyl Siding Removal Tool



TP-102



WB-100

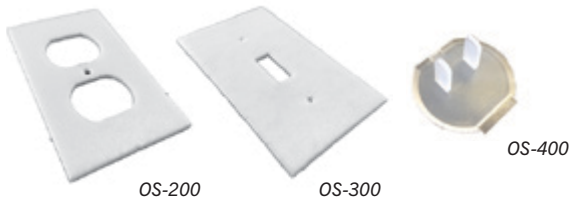
LB-100

### Tool Pouches & Belts

The "Insulator's Tool Pouch" is a leather pouch with a divider inside and a utility knife holder on the front. The web belt is 2-3/4 in. wide with government-specified hardware and it adjusts to a 48 in. waist. The leather belt adjusts up to a 46 in. waist and is 1-3/4 in. wide.

SKU	SIZE	QUANTITY
TP-102	Insulator's Tool Pouch	18/Case
WB-100	Web Belt	6/Pack
LB-100	Leather Belt	1

**ORDER ONLINE!**  
 Visit us online for monthly specials  
[jrproductsinc.com](http://jrproductsinc.com)



### Outlet & Switch Insulating Gaskets

These foam outlet and switch gaskets are UL approved and made of closed-cell material. Use them along with safety caps on all outside walls to prevent air infiltration.

SKU	DESCRIPTION	QUANTITY
OS-200	Receptacle Gasket	4000/Case
OS-300	Switch Gasket	4000/Case
OS-400	Safety Caps	18/Pack; 1800/Case



**ludwig**

### Ludwig Snap Fasteners

Made of hardened spring steel, these fasteners seal storm doors and screens to protect against drafts, resulting in lower fuel costs. They can be used on the sides or tops of windows and are packaged with screws. DJ435 fasteners are deep-fitting fasteners.

SKU	MFG. SKU	DESCRIPTION	QUANTITY
481493	PB36	Ludwig Snap Fastener, Standard	Bulk
481492	DJ435	Ludwig Snap Fastener, Deep	Bulk



### Streamlight Trident® LED Headlamps

The Streamlight Trident® LED headlamp provides rugged, water-resistant, hands-free lighting. Its dual system combines a single C4® power LED with three ultra bright 5 mm LEDs for long and close distance light in one package. This headlamp runs up to 5 hours on three AAA batteries, which are included.

SKU	DESCRIPTION
HL-100	Streamlight Trident® LED Headlamp with 3 AAA Batteries



### Open-Cell Sealing Foam

Tight-fit open-cell sealing foam has a self-adhesive and is packaged with 24 per carton.

SKU	SIZE	COLOR	QUANTITY
481915	3/16 in. x 3/8 in. x 17 ft.	Gray	12/Carton
481513	3/8 in. x 1/2 in. x 17 ft.	Gray	12/Carton

### PVC Closed-Cell Foam

This foam is packaged with 24 pieces per carton.

SKU	SIZE	COLOR	QUANTITY
481511	3/16 in. x 3/8 in. x 17 ft.	White	12/Carton
481914	3/16 in. x 3/8 in. x 17 ft.	Gray	12/Carton
482678	3/8 in. x 1/2 in. x 10 ft.	Gray	12/Carton

## 4 WAYS TO ORDER!

Visit us online for monthly specials

	Phone	800-343-4446 260-353-3600	8 AM-5 PM EST
	Fax	800-518-4446 260-353-3826	24 HR
	Web	jproductsinc.com	24 HR
	Pick Up	Stop by your local J&R Products or Cameron Ashley location (Call ahead to check availability)	



GT-100



BT-125

### Wall Tubing

Summer grade tubing is designed for warm days while the all weather grade is perfect for any season.

SKU	INSIDE DIAMETER SIZE	OUTSIDE DIAMETER SIZE	STYLE
GT-100	1 in.	1-¼ in.	Summer
GT-125	1-¼ in.	1-½ in.	Summer
BT-100	1 in.	1-¼ in.	All Weather
BT-125	1-¼ in.	1-½ in.	All Weather
BT-150	1-½ in.	1-¾ in.	All Weather
BT-200	2 in.	2-¼ in.	All Weather



### Flexaust® Mark II Hose

Mark II hose features an especially abrasion-resistant crown and translucent ribbed walls for easy monitoring of cellulose/material flow. Lightweight polyethylene hose offers superior flexibility with the added feature of having interior walls designed to achieve the greatest amount of fluffing possible to the material being blown through it. This hose is both durable and economical for rugged, all purpose performance.

SKU	INSIDE DIAMETER SIZE	COLOR
MK-1550	1-½ in. x 50 ft.	Clear
MK-2050	2 in. x 50 ft.	Clear
MK-2550	2-½ in. x 50 ft.	Clear
MK-3050	3 in. x 50 ft.	Clear
MK-3550	3-½ in. x 50 ft.	Clear
MK-4050	4 in. x 50 ft.	Clear



### Powdered Graphite

Graphite powder reduces static electricity and friction. One or two cans should occasionally be blended with cellulose and run through the blower and hose. Doing this provides lubrication that increases efficiency and flow.

SKU	DESCRIPTION	QUANTITY
PG-430	1 lb.	12 Cans/Case



### Flexaust® Flex-Plus Hose

This hose has a smooth bore interior which allows more fiberglass insulation to be blown through it. It is formulated with premium grade copolymer and is crush-proof and abrasion-resistant. Flex-Plus hose is strong and flexible and can withstand the heaviest insulation blowing schedule because cap and channel are spirally wound together. It is also lightweight and transparent for easy monitoring of material flow.

SKU	INSIDE DIAMETER SIZE	COLOR
FC-3550	3-½ in. x 50 ft.	Clear

### Vacuum Hose

This clear 4 in. and 6 in. hose is wired to prevent collapsing. Light-duty hose is recommended for recycling and heavy-duty hose is recommended for removal.



SKU	DESCRIPTION	STYLE
SB-4050	Flexaust® Vacuum Hose, 4 in. x 50 ft.	Light-Duty
CV-6025	Flexaust® Vacuum Hose, 6 in. x 25 ft.	Light-Duty
VH-4050	Flexible Technologies Vacuum Hose, 4 in. x 50 ft.	Heavy-Duty
VH-6025	Flexible Technologies Vacuum Hose, 6 in. x 25 ft.	Heavy-Duty



### Hose Clamps

These steel worm gear hose clamps come in a variety of options to fit multiple hose sizes.

SKU	SIZE
CL-100	2 in.–3 in.
CL-400	4 in.
CL-600	6 in.
CL-800	2 in.–12 in.



### Directional Nozzles

SKU	OUTSIDE DIAMETER SIZE	DESCRIPTION
DS-200	2 in.	Deluxe, Non-Swivel
DS-201	2 in.	Deluxe, Swivel
DS-250	2-½ in.	Deluxe, Non-Swivel
DS-251	2-½ in.	Deluxe, Swivel
DS-252	2-½ in. to 2 in.	Swivel Nozzle Reducer

## 4 WAYS TO ORDER!

Visit us online for monthly specials

	Phone	800-343-4446 260-353-3600	8 AM-5 PM EST
	Fax	800-518-4446 260-353-3826	24 HR
	Web	jrproductsinc.com	
	Pick Up	Stop by your local J&R Products or Cameron Ashley location (Call ahead to check availability)	

### Steel Connectors



SKU	OUTSIDE DIAMETER SIZE	DESCRIPTION
SC-200	2 in.	Steel Connector
SC-250	2-½ in.	Steel Connector
SC-300	3 in.	Steel Connector
SC-349	3-½ in.	Steel Connector
SC-400	4 in.	Steel Connector
SC-600	6 in.	Steel Connector

### Steel Reducer Connectors



SKU	OUTSIDE DIAMETER SIZE	DESCRIPTION
RN-210	2 in. to 1 in.	Steel Nozzle
RN-214	2 in. to 1-¼ in.	Steel Nozzle
RN-215	2 in. to 1-½ in.	Steel Reducer
RC-252	2-½ in. to 2 in.	Steel Reducer
RC-320	3 in. to 2 in.	Steel Reducer
RC-325	3 in. to 2-½ in.	Steel Reducer
RC-352	3-½ in. to 2-½ in.	Steel Reducer
RC-353	3-½ in. to 3 in.	Steel Reducer
RC-430	4 in. to 3 in.	Steel Reducer
RC-435	4 in. to 3-½ in.	Steel Reducer
CV-6040	6 in. to 4 in.	Steel Reducer
GV-8060	8 in. to 6 in.	Steel Reducer



### Steel Y Connectors

Y connectors are used to connect two machines into one hose.

SKU	OUTSIDE DIAMETER SIZE	DESCRIPTION
YC-222	(2) 2 in. to (1) 2 in.	Y Connector
YC-250	(2) 2 in. to (1) 2-½ in.	Y Connector
YC-255	(2) 2-½ in. to (1) 2-½ in.	Y Connector
YC-260	(2) 2-½ in. to (1) 3 in.	Y Connector
YC-300	(2) 2 in. to (1) 3 in.	Y Connector
YC-333	(2) 3 in. to (1) 3 in.	Y Connector
YC-400	(2) 2-½ in. to (1) 4 in.	Y Connector
YC-430	(2) 3 in. to (1) 4 in.	Y Connector
YC-446	(2) 4 in. to (1) 6 in.	Y Connector

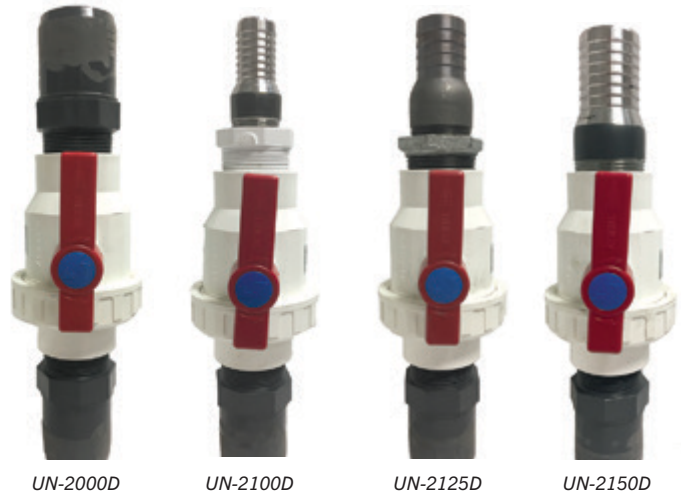
# Accessories

We carry a variety of sizes and types of nozzles, reducers, connectors and adapters for you to choose from. Their design and solid construction make them a great buy.



## Accessories

SKU	SIZE	DESCRIPTION
UN-900	2 in.	Outlet Fitting
UN-1000	1 in.	Nozzle Tip
UN-1025	1-¼ in.	Nozzle Tip
UN-1050	1-½ in.	Nozzle Tip



## Ultimate Shut Off Nozzles

Our Ultimate shut off nozzles feature ball closing action, are lightweight and have an airtight shut off. They are superior quality and can be easily disassembled to replace worn parts. Ultimate Nozzles come with Viton® O-rings and seals.

SKU	SIZE	DESCRIPTION
UN-2000D	2 in. to 2 in.	Ultimate Shut Off Nozzle
UN-2100D	2 in. to 1 in.	Ultimate Shut Off Nozzle
UN-2125D	2 in. to 1-¼ in.	Ultimate Shut Off Nozzle
UN-2150D	2 in. to 1-½ in.	Ultimate Shut Off Nozzle



## Reducing Nozzles

SKU	OUTSIDE DIAMETER SIZE	DESCRIPTION
RN-210	2 in. to 1 in.	Steel Nozzle
RN-214	2 in. to 1-¼ in.	Steel Nozzle
BR-211	2 in. to 1 in.	Plastic Nozzle
BN-2100	2 in. to ¾ in.	Brick Nozzle
RN-215	2 in. to 1-½ in.	Steel Reducer



## Swivel Reducers

These reducers help minimize installer fatigue and eliminate unwanted kinks. All tapered swivel reducers are made from durable polyurethane and can be used with or without wall tubing.

SKU	OUTSIDE DIAMETER SIZE
ISR-214	2 in. to 1-¼ in.
ISR-252	2-½ in. to 2 in.
ISR-325	3 in. to 2-½ in.



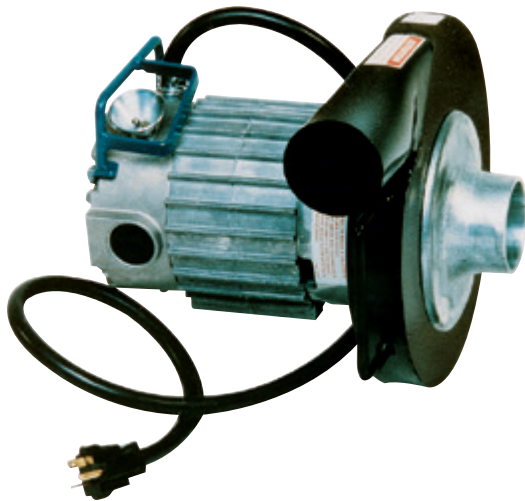


482599

### Swivel Hose Connectors

These connect hoses while allowing them to turn freely.

SKU	OUTSIDE DIAMETER SIZE	MATERIAL
482743	2 in.	Aluminum
482732	2-½ in.	Aluminum
482724	3 in.	Aluminum
482599	4 in.	Aluminum
482744	6 in.	Aluminum
ISC-400	4 in.	Plastic



### Krendl 309 Blowers

Known for durability and high production, Krendl 309 blowers are designed with steel fans and fan chambers, are powered by Dumore motors and have 120V/60 Hz, 20 amp plugs. They are designed with a 2 in. or 2-½ in. outlet and do not need a blower hose adapter. Their blower intake is 2-¾ in.

SKU	DESCRIPTION
SC-350	2-½ in. Outlet
SC-351	2 in. Outlet
SC-039	Motor Only, 120V



### Krendl KD1 Dense Pack Sidewall Nozzles

The Krendl KD1 is used for dense packing walls. The nozzle inserts into the wall and excess air escapes through it as material is being blown into the walls. This allows the wall to be filled faster compared to other methods used to dense pack walls. The nozzle comes with a filter bag that reduces the dust that escapes with the excess air. The KD1 nozzle also allows the installer to drill one hole into the wall instead of two; the nozzle swivels so the material flow can be redirected to the upper portion of the cavity as the wall cavity fills up.

SKU	SIZE
KD-001	Krendl KD1 Dense Pack Sidewall Nozzle
KD-002	Replacement Dust Bag



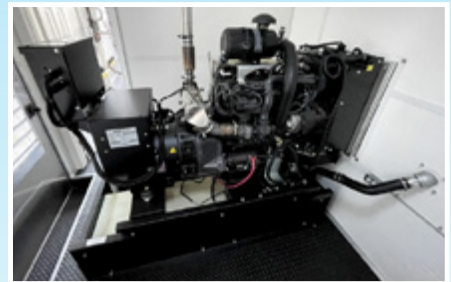
# Expand your business today!

## J&R Insulation Trailer Program

Choose from one of our fully outfitted trailer packages, or create a custom rig based on your business's needs.

### Packages can include

- 16 ft./20 ft. fully outfitted, air conditioned trailer, specified and assembled by Spray Foam Systems
- Spray foam, blowing wool or combo rigs with equipment from the top brands: Cool Machines, Graco, Intec, Krendl and more
- Accessories: hose reels, fresh air supply, generators, compressors, wall scrubbers, vacuums, hoses, spray guns and more
- Private label wraps available upon request for an additional fee



Ask about \$0-down financing

Call Casey for quote / 260-353-3600 / jrproductsinc.com

Pictures shown as examples only. Actual products will vary. Blowing machines sold separately.



### Cool Machines CM-700 Machines

The CM-700 is a portable all-fiber machine for dense pack (retrofit) sidewall, wall spray or attic blow applications. It is designed for high portability and low power requirements. With its compact size and easy hopper removal, handling and transport are simple in any vehicle. This machine is readily supplied from any standard home outlet due to its low power requirements (15 amp single input). The CM-700 produces 950 lbs./hr. of cellulose or 400 lbs./hr. of fiberglass. It is 22 in. wide x 28 in. long x 58 in. high and weighs 180 lbs. A 4,000W generator or larger is required. Wheels are not included.

SKU	DESCRIPTION
CM-712	Cool Machines CM-700 Machine, 15 amp & Double Input
CM-713	Airlock Seals
CM-700W	Wheel Package



### Wireless Remotes & Accessories

SKU	DESCRIPTION
482733	Wireless Remote for Electric Machines
482792	Adapter for Krendl Machines



### Cool Machines CM-1500 Machines

These all-fiber blowing machines handle cellulose, fiberglass and mineral wool as well as damp recycle fiber for wall spray. Their high-pressure (4.5 psi) blower/airlock assembly far exceeds the requirements needed for retrofitting and dense packing sidewalls. CM-1500 standard machines produce 2,200 lbs./hr. of cellulose or 900 lbs./hr. of fiberglass; they are also 24 in. wide x 38 in. long x 57 in. high and weigh 350 lbs. with a double blower model and 330 lbs. with a single blower model. A 7,500W generator or larger is required. Wheels are not included.

SKU	DESCRIPTION
CM-151DI	Cool Machines CM-1500 Machine, Single 13 amp Blower & Double Input
CM-152DI	Cool Machines CM-1500 Machine, Double 13 amp Blowers & Double Input
CM-153DI	Cool Machines CM-1500 Machine, HP, Double 13 amp Blowers, Double Input, One 20 amp Plug & One 15 amp Plug & 18 in. Air Lock
CM-159DI	Cool Machines CM-1500 Machine, 13 amp & 8 amp Blowers & Double Input
CM-151S	Airlock Seals
CM-150S	10 in. Airlock Seals (for Machines Before 1/31/11)
CM-150NW	Wheel Package



### Cool Machines Pressure Gauges

SKU	DESCRIPTION
CM-001	Pressure Gauge



### Cool Machines CM-2400 Machines

The CM-2400 series is a low maintenance, economical and high production machine with a simple design. Its minimal amount of moving parts makes repairs easy. It produces 3,000 lbs./hr. of cellulose or 1,000 lbs./hr. of fiberglass. The CM-2400 is 23 in. wide x 62 in. long x 48 in. high. It weighs 720 lbs. with a double blower model, 750 lbs. with a four blower model, and 780 lbs. with a P.D. blower model. An 8,000W generator or larger is required.

SKU	DESCRIPTION
CM-2400DI	Cool Machines CM-2400 Machine, Double 13 amp Blowers & Double Input
CM-2400SI	Cool Machines CM-2400 Machine, Double 13 amp Blowers & Single Input
CM-2404SI	Cool Machines CM-2400 Machine, Four 13 amp Blowers & Single Input (Requires a 12,000W Generator or Larger)
CM-2405PD	Cool Machines CM-2400 Machine, Five HP P.D. Blower (Requires 12,000W Generator or Larger)
CM-240H	Hopper Extension
CM-240W	Wheel Package
CM-2400S	Airlock Seals



### Cool Machines CM3000XL Machine Systems

Dual "scalping" augers enhance feeding and eliminate bridging in the hopper. A high-speed stainless turbo-shredder maximizes fiber conditioning and production. LED-lighted plugs and receptacles allow for quick electrical diagnostics. This machine also features two air lock options, a reversible hopper and a 4 in. Output. Ask about custom setup options to match your project needs.

SKU	DESCRIPTION
482731	Cool Machines CM3000XL Machine System



### Cool Machines CM-3500XL Machine Systems

Made for high production and versatility, the CM-3500XL with optional 5 HP positive displacement (P.D.) blower is an all-fiber machine that features an oversized 12 in. diameter by 24 in. long airlock. It produces 5,400 lbs./hr. of cellulose or 2,400 lbs./hr. of fiberglass with the optional 5 HP P.D. blower. The CM-3500 XL can be transported in a truck or trailer to the job-site, and set up to spray or blow in minutes with its ingenious dual slide gate feed control. Generator costs can be reduced with the lower power requirements of this blower (240V 30 amp).

SKU	DESCRIPTION
CM-3500SI	Cool Machines CM-3500XL Machine System, 5 HP P.D. Blower (Requires a 12,000W Generator or Larger)
CM-350H	Hopper Extension
CM-3500S	Airlock Seals



### Krendl 475 Electric Machines

This low-maintenance, economical machine is designed for high production. It will run on normal household power and requires two 120V 15 amp circuits. The Krendl 475 provides a large, easy-loading hopper and produces 2,100 lbs./hr. of cellulose or 700 lbs./hr. of fiberglass. It is 37 in. wide x 31-½ in. deep x 63 in. high and weighs 360 lbs. The 475 comes with wheels, a 150 ft. remote control and has a 3 in. hose outlet. An 8,000W surge/startup generator is required.

SKU	DESCRIPTION
AF-475	Krendl 475 Electric Machine
AF-4756	12 in. Airlock Seals, Set of 6

### Accessories for Krendl 475 Electric Machines

SKU	DESCRIPTION
IF-014	Replacement Blower, 14 amp
KD-397	Remote Control, 150 ft.
EC-100	12-3 Cord, 15 amp Plug, 50 ft.
EC-101	10-3 Cord, 15 amp Plug, 100 ft.
482733	Wireless Remote for Electric Machines
KD-232	3-Way Hand Pendant
KD-230	3-Way Switch Only



### Krendl 575 Electric Machines\*

The Krendl all-fiber 575 electric machine is a great mid-sized machine. It has a 3 in. hose outlet, dual agitators and a dual blower system. The Krendl 575 produces 2,600–2,800 lbs./hr. of cellulose or 800–1,000 lbs./hr. of fiberglass. It is 38 in. wide x 28 in. deep x 63 in. high and weighs 382 lbs. This machine can be wired for two 120V circuits or one 30 amp 240V circuit. It includes a 150 ft. remote control. A 12,000W surge/startup generator is required.

SKU	DESCRIPTION
482915	Krendl 575 Electric Machine, Triple Input 120V (Requires three 15 amp 120V Circuits)
AF-575D	Krendl 575 Electric Machine, Double Input 120V (Requires a 20 amp 120V Circuit & a 30 amp 120V Circuit)
AF-575S	Krendl 575 Electric Machine, Single Input 240V (Requires a 30 amp 240V Circuit)

### Accessories for Krendl 575 Electric Machines\*

SKU	DESCRIPTION
AF-571	Air Filter
AF-572	14 in. Airlock Seals, Set of 6
KD-397	Remote Control, 150 ft.
482733	Wireless Remote for Electric Machines
IF-014	Replacement Blower, 14 amp
KD-232	3-Way Hand Pendant
KD-230	3-Way Switch Only
EC-050	8-4 Cord, 50 amp Plug (Use with Generator), 50 ft.

\*The following extension cords can be used with this machine: EC-102, EC-103, EC-104, EC-105 and EC-050. Extension cords can be found on page 55.



### Krendl 2300 Electric Machines\*

The Krendl 2300 has a 3 in. hose outlet, dual agitators, a 2 HP direct drive motor, a shredder assembly and a dual blower system. It will produce 3,000 lbs./hr. of cellulose or 1,000 lbs./hr. of fiberglass. The airlock system slides out to reduce maintenance downtime. The 2300 has a large 40 cu. ft. hopper capacity with a loading tray. It is 32-½ in. wide x 68 in. deep x 71 in. high and weighs 850 lbs. This machine comes with a 150 ft. remote control. A 17,500W surge/startup generator is required.

SKU	DESCRIPTION
AF-2300D	Krendl 2300 Electric Machine, Double Input 120V (Requires one 20 amp 120V Circuit & one 30 amp 120V Circuit)
AF-2300S	Krendl 2300 Electric Machine, Single Input 240V (Requires one 30 amp 240V Circuit)

### Accessories for Krendl 2300 Electric Machines

SKU	DESCRIPTION
AF-453	Air Filter
AF-240	16 in. Airlock Seals, Set of 6
KD-397	150 ft. Remote Control
482733	Wireless Remote for Electric Machines
AF-300	Heavy-Duty Castor Set
IF-067	12.5 amp Replacement Blower (Serial #881 & Before)
IF-014	14 amp Replacement Blower (Serial # after 881)
EC-050	50 ft. 8-4 Cord, 50 amp Plug (Use with Generator)
KD-232	3-Way Hand Pendant
KD-230	3-Way Switch Only

\*The following extension cords can be used with this machine: EC-102, EC-103, EC-104, EC-105, EC-106, EC-107 and EC-050. Extension cords can be found on page 55.



### Krendl Pressure Gauges

SKU	DESCRIPTION
AF-250	Krendl Pressure Gauge

### Krendl 2800-G Gas Machines

This machine is specifically designed for contractors; it is capable of blowing all major brands of cellulose and fiberglass according to manufacturer specifications. The 2800-G will produce 3,600 lbs./hr. of cellulose or 2,100 lbs./hr. of fiberglass. It weighs 1,195 lbs., is 41 in. wide x 65 in. deep x 73 in. high and has a 40 cu. ft. hopper capacity. This machine comes with a user-friendly 12V DC electric dashboard, an 18 HP Briggs & Stratton® V-twin gas engine, a clear acrylic safety guard that allows for inspection and a durable powder coat finish. Its control panel has engine controls, a pressure gauge and air bleed off.

SKU	DESCRIPTION
AF-2800	Krendl 2800-G Gas Machine, 4 in. Output
AF-240	16 in. Airlock Seals (Set of 6)
AF-402	Filter
KD-232	3-Way Hand Pendant
KD-230	3-Way Switch Only



### Wireless Remotes & Accessories

SKU	DESCRIPTION
482733	Wireless Remote for Electric Machines
482792	Adapter for Krendl Machines



### Intec FORCE/3 HP Machines

With cellulose production rates up to 2,220 lbs./hr. and fiberglass production rates up to 900 lbs./hr., this unit is used by contractors performing retrofit or new construction installs. Many profit generating opportunities are available as applications include attic installs, dense pack, spray-in and spray-on.

SKU	DESCRIPTION
IF-301	FORCE/3 HP Machine
IF-302	Airlock Seals, Set of 6

- Hopper capacity: 11.5 cu. ft.
- Hose size: 3 in.
- Blower(s): 1 high-performance 120V 15 amp
- Agitator motor: 120V 15 amp
- Transmission: worm gear/direct drive
- Electric: 120V standard; 240V options available (two 120V 15 amp circuits required)
- Agitator: 5-blade vertical
- Warranty: 1-year limited; 90-day electric, airlock system, and blower\* Production:
- Cellulose: 28–37 lbs./min.
- Fiberglass: 11–15 lbs./min.
- Weight: 335 lbs.
- Dimensions: 29 in. wide x 30 in. long x 51 in. high

\*See manufacturer warranty for complete information.



### Intec FORCE/2 HP Machines

This high-pressure machine allows fast and efficient dense packing. It is a powerful two-stage blower with a one-way valve and many features including high volume, high pressure and long life. The FORCE/2 HP has twist-lock electrical receptacles and polyethylene construction that makes this machine rust-free, lightweight and extremely durable. Its urethane seals provide higher pressures, increased production rates and less maintenance. This machine comes with stainless steel airlock plates.

- Transmission: durable direct drive with no chains
- Hose outlet: 3 in. (7.6 cm)
- Electrical: 115 VAC (two 15 amp circuits required)
- Blower: two-stage 115 VAC with 15 amp input and a one-way valve
- Agitator motor: 1-½ HP 115 VAC with a 15 amp input
- Hopper: 9 cu. ft. (13 with hopper extension)
- Warranty: 1-year limited\* High-production (testing per ASTM C519 standards):
- Cellulose: 30–40 lbs./min.
- Fiberglass: 9–11 lbs./min.
- Weight: 260 lbs.
- Dimensions: 30-¼ in. x 44-¾ in.

SKU	DESCRIPTION
IF-002HP	Force/2 HP Machine
IF-004	Airlock Seals, Set of 6
IF-100	Wireless Remote Control
XC-100	Extension cord

\*See manufacturer warranty for complete information.



TF-003

### Intec TURBO™ FORCE Machines

These portable machines put you in the lead with labor savings. They have the fastest-in-class install speeds for dense pack, blow behind netting and attic applications while meeting manufacturer coverage charts. Their 15 cu. ft. hoppers hold 2+ bags of cellulose or 1 bag of fiberglass; this allows for enhanced crew sequencing. In addition to application versatility and ease of use, TURBO™ FORCE machines also have quick, easy access for making machine adjustments with their tilt-back design. The TURBO™ FORCE HP2 weighs 478 lbs. and the TURBO™ FORCE HP MAX weighs 488 lbs. Both models are 29-½ in. wide x 36-½ in. long x 63-½ in. high. All TURBO™ FORCE machines come with a variable-speed blower pressure control. The TURBO™ FORCE HP2 and TURBO™ FORCE HP MAX are available with GoWireless industrial wireless remotes. Both models come with a 1-year limited warranty on their transmissions and drive motors and a 90-day warranty on their electrical systems, airlock systems and blower motors.\* A 10,000W generator with three 110V outlets is recommended.

#### Production Rates:

**TF-002:** cellulose up to 2,460 lbs./hr. and fiberglass up to 900 lbs./hr.

**TF-003:** cellulose up to 3,300 lbs./hr. and fiberglass up to 1,200 lbs./hr.

SKU	DESCRIPTION
TF-002	TURBO™ FORCE HP2
TF-003	TURBO™ FORCE HP MAX
IF-302	Airlock Seals, Set of 6

\*See manufacturer warranty for complete information.



EC-100



KD-397

### Power Extension Cords & Cord Remote Controls

Choose from our wide variety of extension cords to meet your electrical needs. Avoid problems like underpowering your machine and start with the correct cords. Krendl remote control cords come complete with hand pendants.

SKU	DESCRIPTION
EC-105	8/4 Extension Cord, 30 amp Plug, 100 ft.
EC-050	8/4 Extension Cord, 50 amp Plug, 50 ft.
EC-101	10/3 Extension Cord, 15 amp Plug, 100 ft.
482375	10/3 Extension Cord, 20 amp Plug, 100 ft., Cool Machines Straight Blade
EC-103	10/3 Extension Cord, 20 amp Plug, 100 ft., Krendl Twist Lock
EC-107	10/3 Extension Cord, 30 amp Plug, 50 ft.
EC-102	10/3 Extension Cord, 30 amp Plug, 100 ft.
EC-104	10/4 Extension Cord, 30 amp Plug, 50 ft.
EC-100	12/3 Extension Cord, 15 amp Plug, 50 ft.
EC-106	12/3 Extension Cord, 20 amp Plug, 50 ft.
XC-100	12/3 Power Extension Cord, 100 ft.
482357	13/3 Extension Cord, 15 amp Plug, 100 ft.
KD-396	Remote Control Extension Cord, Complete with Hand Pendants, 100 ft.*
KD-397	Remote Control Extension Cord, Complete with Hand Pendants, 150 ft.*

\*For Krendl machines June 2019 and older.



IF-067



AF-598



IF-014

### AMETEK® Replacement Blowers

These are replacement blowers for Krendl and Intec machines.

SKU	DESCRIPTION
AF-598	Two-Stage Blower 116207-00, 8.5 amp
IF-067	Three-Stage Blower 116119-00, 12.5 amp
IF-014	Blower 122175-00, 14 amp





### Cool Machines CoolVac-16

The Cool Machines CoolVac-16 is a heavy-duty vacuum with a newly designed blade that creates fan tip turbulence to eliminate any wet fiber accumulation or buildup on the fan blade and chamber area. It weighs 250 lbs. and has an electric start 16 HP Briggs & Stratton® Vanguard® V-twin engine with a 6 in. inlet and a 6 in. outlet and Run-Flat Wheels. The CoolVac-16's dimensions are 36 in. long x 30 in. wide x 48 in. high.

SKU	DESCRIPTION
CV-016	Cool Machines CoolVac-16
CV-018	18 in. Replacement Impeller



### Cool Machines CoolVac-23

This 23 HP vacuum is a rugged economy valued vacuum with a 6 in. inlet and a 6 in. outlet. It weighs 350 lbs. and has an electric start 23 HP Briggs & Stratton® Vanguard® V-twin engine, Run-Flat Wheels and a large 8 gal. fuel take.

SKU	DESCRIPTION
CV-230	Cool Machines CoolVac-23
CV-231	20 in. Replacement Impeller



### Cool Machines CoolVac 37

**BIGGER, BADDER BLADE + MORE HORSEPOWER = SPEED!** Get out of the attic quicker with the increased performance of this new high-powered vacuum. Its powerful suction could potentially double your current production. Performance data is available at jrproductsinc.com.

SKU	DESCRIPTION
CV-037	Cool Machines CoolVac 37



### CoolVac 22

This vacuum features a 22 HP Honda GX690 engine, an 8 gal. fuel tank, positive pressure lubrication, low level oil shutdown, oil pressure shutdown switch, 6 in. inlet and exhaust and 10 in. run-flat wheels. It also has an electric start with a 12V battery included and a 3-year warranty\*.

SKU	DESCRIPTION
482725	Cool Machines CoolVac 22

\*See manufacturer warranty for complete information.



### Cool Machines CoolVac 27

The Cool Machines CoolVac 27 is the most powerful "direct drive" portable vacuum we offer. It has no belts, pulleys or bearings to service. It weighs 365 lbs. and is 45 in. long x 33 in. wide x 45 in. high. The CoolVac 27 has a Briggs & Stratton® Vanguard® 27 HP V-twin, electric start engine with an 8 gal. fuel tank. Its rugged ½ in. thick AR-400 wear-resistant steel chamber has a 4 in. x 22 in. diameter ¼ in. AR-500 gusset reinforced fan blade. With an 8 in. intake and exhaust, the CoolVac 27 can easily process full length fiberglass batts.

SKU	DESCRIPTION
CV-037	Cool Machines CoolVac 27



CV-4060

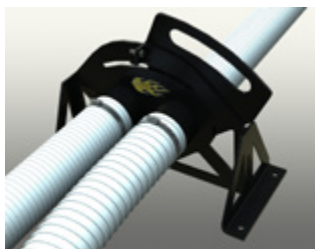


CV-4063

### Vacuum Bags

These bags are 4 ft. x 6 ft. and hold up to 75 cu. ft. of product. Vacuum bags have a 10 in. opening.

SKU	DESCRIPTION	QUANTITY
CV-4060	Disposable Vacuum Bag	20/Case
CV-4062	Disposable Vacuum Bag, Lightweight	20/Case
CV-4063	Disposable Vacuum Bag, Heavy-Duty	16/Case



### Cool Diverter Valve

Divert fiber stream to an empty bag while the operator changes the full bag. Available in 6 in. (15.25cm) and 8 in. (20.32cm).

SKU	DESCRIPTION
482601	Cool Diverter Valve



### Cool Machines Vacuum Savers

Extend the life of your vacuum's blade, chamber, engine and collection bags with the Cool Machines VacSaver.

SKU	DESCRIPTION
CV-023	Cool Machines Vac Saver "X-Large"



CV-6040



CV-6045

SC-600

### Vacuum Accessories

SKU	DESCRIPTION
CL-800	Hose Clamp, 2 in.–12 in.
CL-400	Hose Clamp, 4 in.
SC-400	Hose Connector, 4 in.
SC-600	Hose Connector, 6 in.
CV-6040	Hose Reducer, 6 in.–4 in.
CV-6045	Inlet Reducer, 6 in.–4 in.
CL-600	Strap Clamp, 6 in.
SB-4050	Vacuum Hose, 4 in. x 50 ft.
CV-6025	Vacuum Hose, 6 in. x 25 ft.
VH-4050	Flexible Technologies Heavy-Duty Vacuum Hose, 4 in. x 50 ft.
VH-6025	Flexible Technologies Heavy-Duty Vacuum Hose, 6 in. x 25 ft.



### Intec VORTEC® 690 22(+) HP Vacuum

The Intec VORTEC® 690 comes with an electric start Honda GX690 V-twin 22(+) net HP engine with a 3-year limited warranty\*. It comes with a 6 in. inlet, optional 8 in. inlet and 6 in. outlet. The VORTEC® 690 has an oil alert system that shuts down the motor when oil is low. This vacuum weighs 270 lbs. and has pneumatic wheels.

SKU	DESCRIPTION
IV-690	Intec VORTEC® 690 22(+) HP Vacuum

\*See manufacturer warranty for complete information.



### Krendl GV180 Gas Powered Vacuum

Known for durability and high production, The Krendl GV180 gas powered vacuum is designed with a steel fan and chamber and is powered by a rugged Briggs & Stratton® 18 HP V-twin gas engine. The GV180 is intended for removing all types of blown insulation and for recycling wet spray. This vacuum weighs 240 lbs. and has pneumatic wheels.

SKU	DESCRIPTION
KV-180	Krendl GV180 Gas Powered Vacuum
482897	AR Steel Heavy-Duty Replacement Fan Blade

## 4 WAYS TO ORDER!

Visit us online for monthly specials

Phone	800-343-4446 260-353-3600	8 AM–5 PM EST
Fax	800-518-4446 260-353-3826	24 HR
Web	jrproductsinc.com	24 HR
Pick Up	Stop by your local J&R Products or Cameron Ashley location (Call ahead to check availability)	



### PVC Vacuum Wands

These suction tubes are made of lightweight and sturdy PVC with a 4 in. inlet. They are 48 in. long and their colors may vary.

SKU	DESCRIPTION
WV-101	PVC Vacuum Wand
WV-104	PVC Vacuum Wand with Swivel



### Krendl GV240 Gas Powered Vacuum

The Krendl GV240 Gas Vacuum is designed with a steel fan and chamber and powered by a Briggs & Stratton® 23 HP V-Twin, Kohler 23.5 HP or Honda 22 HP V-Twin gas engine.

SKU	DESCRIPTION
482823	Krendl GV240 Gas Powered Vacuum



### Wolverine® WV-400-14 Steel & Welding Insulation Removal Vacuum

This Wolverine® insulation removal vacuum is equipped with an electric start 14 HP KOHLER® overhead camshaft engine. It has a 6 in. inlet and a 6 in. outlet, weighs 288 lbs. and has pneumatic wheels.

SKU	DESCRIPTION
WV-400	Wolverine® WV-400-14 HP Steel & Welding Insulation Removal Vacuum
WV-103	Replacement Impeller

**PLUS<sup>®</sup>  
POINTS**

**Your Loyalty Rewarded**



**JOIN** for free at [capluspoints.com](http://capluspoints.com)

**EARN** two points per qualifying dollar

**REDEEM** for travel, events, electronics, sporting goods and MORE!

Customer Service: 800-213-9066 or [CAPlus@rewardtrax.com](mailto:CAPlus@rewardtrax.com)

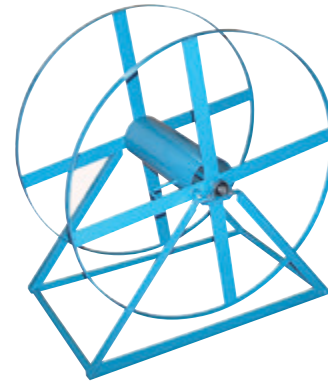
More info on page 40



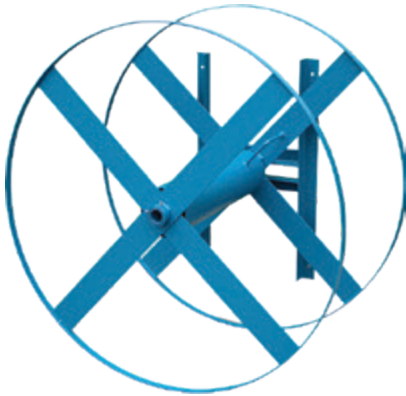
**HR-150**  
35 in. Long x 30 in. Wide x 38 in. High



**HR-200**  
45 in. Long x 30 in. Wide x 49 in. High



**HR-300**  
36 in. Long x 23 in. Wide x 39 in. High



**HR-350**  
45 in. Diameter x 54 in. High



**HR-400**  
90 in. Diameter Truck Mount



**HR-480**  
48 in. Diameter x 23 in. High



**HR-600**  
60 in. Diameter x 22 in. High

### Hose Reels

SKU	SIZE	DESCRIPTION	STORAGE
HR-300	Floor Mount, 36 in. x 23 in. x 39 in.	Large	150 ft. of 3 in. Hose
HR-150	Floor Mount, 36 in. x 30 in. x 38 in.	Large	150 ft. of 3 in. Hose
HR-200	Floor Mount, 45 in. x 49 in. x 30 in.	X-Large	150 ft. of 4 in. Hose
HR-480	Floor Mount, 48 in. x 23 in.	X-Large	150 ft. of 4 in. Hose
HR-600	Floor Mount, 60 in. x 22 in.	X-Large	150 ft. of 6 in. Hose
HR-400	Truck Mount, 90 in.	XX-Large	200 ft. of 4 in. Hose
HR-350	Wall Mount, 44 in. x 28 in.	X-Large	150 ft. of 4 in. Hose

**ORDER ONLINE!** Visit us online for monthly specials • [jrproductsinc.com](http://jrproductsinc.com)



### Cool Machines Cool Tool Wall Scrubbers

This tool is ultra-lightweight (9.8 lb.) to reduce operator fatigue. Its balanced universal handle allows convenient reach of 10 ft. ceilings and a comfortable reach from ladders or scaffolds. Cordless and smaller closet scrubbers are available.

SKU	DESCRIPTION
CM-270	Cool Machines Cool Tool Wall Scrubber
CM-004	Bearing Holder
CM-005	Bearing
CM-031	Roller Assembly
CM-055	Wall Scrubber, 55 in. Belt
CM-130	Cool Machines Cool Tool Motor



482551



DS-298

### Sprayco Scrubber Parts

SKU	DESCRIPTION
DS-292	Belt Guard
DS-293	Cross Brace & Pulley Cleaner
DS-296	DEWALT®, Drill Only
482551	Replacement Belt
DS-298	Roller Assembly
DS-304	Power Switch

### Krendl Wall Scrubbers

These wall scrubbers remove excessive spray-on cellulose insulation between wall studs to make installing drywall easy. They are belt driven scrubbers with tensioners and 1/8 HP TEFC motors. A 27 in. wide scrubber with a 26 in. long frame is for use on 24 in. centers. Krendl wall scrubbers are also available in an 18 in. width for 16 in. on center studs in closets or congested areas. It also comes with an ergonomically designed handle. Schematics and part lists are available at jrproductsinc.com.

SKU	DESCRIPTION
KS-160	Krendl Wall Scrubber for 16 in. On Center
KS-240	Krendl Wall Scrubber for 24 in. On Center
KS-290	Krendl Wall Scrubber for 16 in. On Center with 30 in. Extension
KS-300	Krendl Wall Scrubber for 24 in. with 30 in. Extension

### Accessories

SKU	DESCRIPTION	QUANTITY
KS-161	Roller Assembly, 16 in.	—
KS-241	Roller Assembly, 24 in.	—
KS-242	Belting, 24 in.	2/Set
KS-243	Belting, 16 in.	2/Set
KS-245	Stud Scrubber Motor	—



KS-290



KS-240



KS-160



KS-300



WS-202W

WS-252W

WS-320W

### Wet Spray Nozzles

Wall Cavity Nozzles  
(#2502 tips)

SKU	DESCRIPTION
WS-202W	2 Jet Wall Cavity, 2 in.
WS-252W	2 Jet Wall Cavity, 2-½ in.
WS-320W	2 Jet Wall Cavity, 3 in.

Quick disconnect brass tips; see below for quick disconnect tip sizes.



QD-TIPS

QD-BASE

WS-299

### Nozzle Tips ("New Style" Brass Quick Disconnect)

The first two description numbers are the angle degree the tips will spray at; the last two or three numbers are the orifice size of the water flow. **The larger the number is, the larger the orifice size is.**

SKU	DESCRIPTION
QD-201	#2501
QD-215	#25015
QD-202	#2502
QD-203	#2503
QD-401	#4001
QD-415	#40015
QD-402	#4002
QD-200	Disconnect Base
WS-299	Shut Off Valve



### Attic Tube Assemblies

These are used to inject water into blowing fiber, reducing dust and promoting the setup of material. They come complete with a #4002 tip.

SKU	DESCRIPTION
AT-320	3 in., #4002 Tip
AT-420	4 in., #4002 Tip



WS-254C

WS-256C

### Commercial Nozzles

(#4002 tips)

SKU	DESCRIPTION
WS-204C	4 Jet Commercial, 2 in.
WS-254C	4 Jet Commercial, 2-½ in.
WS-256C	6 Jet Commercial, 2-½ in.
WS-206C	6 Jet Commercial, 2 in.

Stainless steel screwed-in tips; see below for screw-in tip sizes.



WS-TIP

### Nozzle Tips (Stainless Steel Screw-In)

The first two description numbers are the angle degree the tips will spray at; the last two or three numbers are the orifice size of the water flow. **The larger the number is, the larger the orifice size is.**

SKU	DESCRIPTION
WS-301	#1501
WS-303	#4001
WS-302	#40015
WS-300	#4002
WS-304	#4008



### High-Pressure Water Hose

This ¾ in. hose is available in several lengths with ¼ in. pipe ends. The maximum pressure is 350 psi. Quick disconnect ends are included with each hose.

SKU	DESCRIPTION
GH-050	50 ft.
GH-100	100 ft.
GH-150	150 ft.
GH-200	200 ft.



### Krendl MP-20 Pump & Motor

This high-quality, double belt driven pump with a 1 HP TEFC motor offers easy, reliable operation. It is ideal for the professional contractor, delivers 5.7 gpm at 200 psi and weighs 82 lbs.

SKU	DESCRIPTION
WS-120	Krendl MP-20 Pump & Motor*
WS-120S	Hose Kit
WS-199	Diaphragm Only
WS-123	Discharge Control Assembly
WS-194	Diaphragm kit

\*Pump must ship LTL.



### Hose Kits for Pumps

Hose kits for the MP-20 and M-3 pumps include the following: 150 ft. of 300 psi pressure line, a pick up line, a return line and a filter.

SKU	DESCRIPTION
WS-120S	MP-20 Hose Kit, 150 ft.
WS-030S	M-3 Hose Kit, 150 ft.



### Krendl M-03 Pump & Motor

The Krendl M-03 pump and motor is an economical direct-drive, self-priming, triple diaphragm pump with a 3/4 HP TEFC motor. It delivers 3 gpm with a maximum of 300 psi and weighs 70 lbs.

SKU	DESCRIPTION
WS-030	Krendl M-03 Pump & Motor*
WS-030S	Hose Kit
WS-032	Diaphragm Kit with Valves (Model with K)
WS-031	O-Rings & Diaphragms Only (Model with A or D)

\*Pump must ship LTL



### Glue/Water Barrels

This heavy-duty plastic barrel has a lid and a 48 gal. capacity.

SKU	DESCRIPTION
WS-200	Krendl Glue/Water Barrel with Lid



### Wet Spray Glue

This adhesive is designed for the spray application of cellulose, mineral wool and fiberglass to a variety of surfaces. It dries into a tough, flexible, water-resistant film, creating a highly bonded finish to many substances.

SKU	DESCRIPTION
GL-550	55 gal. Drum
GL-551	5 gal. Bucket



### Depth Gauges

These are ideal for measuring the thickness of sprayed insulation.

SKU	DESCRIPTION
DG-100	Depth Gauge

## 4 WAYS TO ORDER!

Visit us online for monthly specials

	Phone	800-343-4446 260-353-3600	8 AM-5 PM EST
	Fax	800-518-4446 260-353-3826	24 HR
	Web	jrproductsinc.com	24 HR
	Pick Up	Stop by your local J&R Products or Cameron Ashley location (Call ahead to check availability)	

J&R Products  
1955 Lancaster Street, Suite 6  
Bluffton, IN 46714

# 4 WAYS TO ORDER J&R PRODUCTS



## Phone

800-343-4446  
260-353-3600  
8 AM–5 PM EST



## Fax

800-518-4446  
260-353-3826



## Web

[jrproductsinc.com](http://jrproductsinc.com)  
Visit us online for daily specials



## Pick Up

Stop by your local  
J&R Products or  
Cameron Ashley  
location

(Call ahead to check availability)

Terms and conditions are available online at [jrproductsinc.com/terms-and-conditions](http://jrproductsinc.com/terms-and-conditions)



&



**CAMERON ASHLEY**  
BUILDING PRODUCTS