



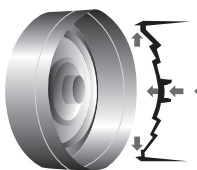
Clean-Up & Storage

Clean up any fresh product on surfaces and skin with soap and water. Flush the paint measuring syringe with soap and water.

Store **eXact color**® in a cool, dry location. Once mixed, use any remaining product within one year.

Caution

Carefully handle the activator! Keep away from skin and eyes. If skin or eye contact occurs, flush with large amounts of water. Once the activator is mixed into the sealant base it is safe for handling. Immediately discard the activator packaging and keep away from children. See the MSDS for additional details.



Alyster Plunger
9.5 oz. cartridges come with a unique Alyster plunger.

A flexible telescopic diaphragm not only stops material flow, it actually pulls material back into the nozzle!

- **Tight Seal**—Increases shelf life and minimizes leakage.
- **Stop Flow**—The flexible telescopic diaphragm assures that material flow will stop when caulk gun pressure is released.

Limited Lifetime Warranty

Sashco warrants this product will substantially meet published specifications on the date of sale. If it fails to do so, return unused portion with original sales receipt for replacement or refund, at Sashco's sole option. These are purchaser's sole and exclusive remedies for any breach of warranty. Purchaser must determine suitability of product for purchaser's specific needs and assumes all risk associated with its use. Sashco will not be liable for direct or indirect damages.

For a detailed description of the warranty and exclusions, please visit our website at www.sashco.com.

TYPICAL PROPERTIES:

Property	Value
Packaging	9.5 fl. oz. plastic cartridge (final yield after mixing), 1 activator pack, 1 measuring syringe, 1 nozzle, 1 clear cap
Joint Size	Maximum 2"
Application Range	40°F to 90°F (4°C to 32°C) surface temp.
Service Range	-30°F to 250°F (-34°C to 121°C)
Tensile Properties	Recovery at 50% stretch: 100% in 3 minutes Recovery at 100% stretch: 96% in 5 minutes
VOC	79.4 g/L, <1.5% by weight (once the activator is added to the sealant base) <ul style="list-style-type: none"> • pH of sealant base before use: 6.7 • pH of activator: 12 • pH of mixed sealant ~8.5 (depending on pH of paint or stain added to sealant base)
Viscosity	< 50,000 cps. (sealant base before thickened)
Density of sealant base	8.6 lbs./gal.

TEST DATA:

Property	Results	Test Method
Durability	12.5% joint movement (10 cycles @ -15°F (-26°C))	ASTM C719
Hardness, Shore A	33 (21-day cure)	ASTM C661
Slump	< 1/8"	ASTM D2202
Solids	55.6% by weight (of sealant base) 59.7% by volume	ASTM C1250
Extrusion Rate	750 g/min (1/8" orifice at 40 psi)	ASTM C603
Freeze-Thaw Stability	3 cycles max at 0°F. No freeze/thaw stability at -15°F. Keep from freezing	ASTM C731
Low Temp. Flexibility	Pass (not artificially weathered)	ASTM C734
Tack-free	Less than 30 minutes	ASTM C679
Cured	4-5 days (dependent on temp., humidity and bead size)	ASTM C679
Adhesion-in-peel**	Concrete • Glass	ASTM C794
Passing Substrates	PVC • Wood • Tile	

** Not comprehensive. Contact Sashco with questions about other substrates.

SPECIFICATIONS:

- Meets FHA requirements.
- Meets the performance requirements of ASTM C834
- Meets or exceeds Federal Specification TT-S-00230 C

The data reported here is believed to be reliable. No warranty is made concerning the accuracy of or the results obtained from its use.

*McKonica® and Kynar® are registered trademarks of their respective owners.

KEEP OUT OF REACH OF CHILDREN.



XCT002 4-14



Tintable Color Caulking – Just Add Paint!



10300 E. 107th Place
Brighton, CO 80601
800-767-5656

www.sashco.com

Keep up with Sashcoinc on:





Are you tired of ugly caulk lines? Have you been on an endless search for that perfect caulk to match your new paint job, only to end up disappointed? Your search is over. Perfectly color matched caulk is here with eXact color®. Just add your paint and mix it up to create an eXact match to any color. No tools required. No mess. Rest easy, stop searching, and use eXact color.

Why eXact color®:

- **Infinite color possibilities**—Use any water-based paint or stain, including textured and metallic.
- **Water-based**—easy to tint, easy to apply, easy to clean up.
- **Excellent adhesion & elasticity**—won't pull away or crack.

Where to Use:

Interior Applications:

- Backsplashes
- Countertops
- Crown moulding
- Tile
- Walls
- Around doors & windows

Exterior applications:

- Around windows or shutters
- Brick, stone and stucco
- Siding (wood, fiber cement board, vinyl)

Adheres to Most Building Materials:

Metals

- Aluminum
- Steel

Plastics

- ABS
- Acrylic Sheet
- Fiberglass
- Lexan®*
- Nylon
- Polycarbonate
- PVC
- Vinyl

Other Surfaces

- Brick
- Corian®*
- Drywall
- EIFS
- Fiber Cement
- Formica®*
- Glass
- Mortar
- Stone
- Stucco
- Tile
- Wood

* Lexan®, Formica® and Corian® are registered trademarks of their respective owners.

Where Not To Use eXact color®:

- Areas of water submersion or frequent, prolonged puddling
- Areas with high foot and/or vehicle traffic (use Sashco's Slab® instead)
- Roofs exposed to prolonged dampness (use Sashco's Through The Roof!® instead)
- Will not adhere to or is incompatible with Kynar®, polypropylene, silicone, polyethylene, and waxes
- May discolor copper and brass

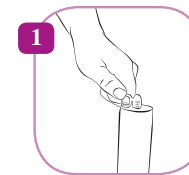
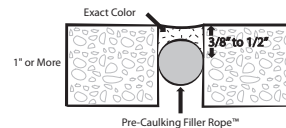
Before You Start...

- Allow 1-3 days curing before exposure to direct rainfall. Use plastic sheeting with good airflow underneath to protect the product if rain is expected sooner. eXact color cures by evaporation. Lower temperatures and higher humidity will slow down cure time.
- Natural shrinkage will give the joint a concave appearance; multiple applications may be needed to fill the joint flat.
- Apply when surfaces are dry and surface temperature is between 40° and 90°F (4° to 32°C).
- Visit <http://www.sashco.com/diy/caulking-101/> to get the details on proper caulking application.

Substrate/Surface Preparation:

- If dirt or oils are present, wash with any household cleaner, rinse to remove, and allow to dry.
- Remove any old sealants, especially silicone. Use a silicone remover such as McKanica® Silicone Caulk Remover.

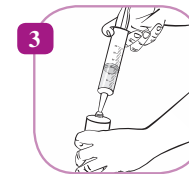
Joint design: In joints 1/2" deep or deeper and at least 1/4" wide, insert Sashco's Filler Rope™ (backer rod), which creates the ideal joint design and helps you use less eXact color. (Refer to diagram for details.)



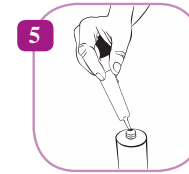
Twist Off Cap



Extract Paint



Inject Paint



Add Activator

Mixing eXact color®:

1. Twist off cap
2. After thoroughly mixing your water-based paint or stain, draw up 30 mL of paint (or 10 mL of stain).
3. Inject the paint or stain into the top of the cartridge.
4. Screw on the clear cap and shake the cartridge for at least 60 seconds—either by hand or in a paint shaker/mixer.
5. Remove the cap, open the activator pack and squeeze the entire contents into the cartridge.
6. Replace the cap and **vigorously** shake the cartridge for at least 60 seconds—either by hand or in a paint shaker/mixer. Ensure color is evenly distributed throughout. If not, just shake the cartridge for an additional 30-60 seconds.
7. Wait for **30 minutes** for the sealant to fully set.

Applying eXact color®:

1. Remove cap and attach the nozzle. Cut the nozzle to desired bead size.
2. Gun eXact color® into the joint and release the trigger at the end of each bead. (Note: Some air pockets may exist after complete mixing and may lead to an occasional spurt during application.)
3. Smooth the bead with water and a foam brush, beading tool, or your finger. Press the product firmly against both sides of the joint for best adhesion.
4. If painter's tape was used, remove immediately after smoothing, before the sealant has skinned over.
5. eXact color® turns darker as it cures and will be an exact color match to your paint once dry.